

TM 5-3431-200-35P

DEPARTMENT OF THE ARMY TECHNICAL MANUAL

DIRECT AND GENERAL SUPPORT AND DEPOT
MAINTENANCE REPAIR PARTS AND SPECIAL
TOOLS LIST

WELDING SET, ARC, INERT GAS SHIELDED: PLASTIC
OR METAL LINED GUN; FOR 3/64 IN. WIRE; DC, 115V
(WESTINGHOUSE MODEL SA-135) FSN-3431-879-9709

HEADQUARTERS, DEPARTMENT OF THE ARMY

FEBRUARY 1969

DIRECT AND GENERAL SUPPORT AND DEPOT MAINTENANCE
REPAIR PARTS AND SPECIAL TOOLS LIST

WELDING SET, ARC, INERT GAS SHIELDED: PLASTIC OR
METAL LINED GUN; FOR 3/64 IN. WIRE; DC, 115V
(WESTINGHOUSE MODEL SA-135) FSN 3431-879-9709

Current as of 12 December 1968

	Paragraph	Page
SECTION I. INTRODUCTION		
Scope	1	iii
General	2	iii
Explanation of columns	3	iii
Special information	4	iv
How to locate repair parts	5	v
Abbreviations	6	v
Federal supply codes for manufacturers	7	v
Report of equipment publications improvements	8	v
		Page
II. REPAIR PARTS FOR DS, GS, AND DEPOT MAINTENANCE		
Group 22. Miscellaneous Body, Chassis or Hull, and Accessory Items		
2210 Data plates and instruction holders	1	1
44. Welding, metalizing, metal heating and plating equipment		
4400 Gas welding, flame cutting	1	1
4407 Control panels, housing, cubicles	5	5
4408 Connecting devices	11	11
4409 Protective services, electrical	13	13
4410 Switching, timing and speed control	14	14
4411 Resistors	19	19
4413 Rectifiers	20	20
4415 Head, torch and gun unitized components	21	21
95. General Use Standardized Parts		
9501 Bulk material	27	27
SECTION III. SPECIAL TOOLS, TEST AND SUPPORT EQUIPMENT FOR DS, GS, AND DEPOT MAINTENANCE-NOT APPLICABLE		
IV. FEDERAL STOCK NUMBER AND REFERENCE NUMBER INDEX		28

*This manual together with TM 5-3431-200-20P, 8 February 1969 supersedes TM 5-3431-200-25P, 27 August 1962.

SECTION I

INTRODUCTION

1. Scope

This manual lists repair parts required for the performance of direct support, general support, and depot maintenance of the welder.

2. General

a. The repair parts list is arranged as follows:

(1) Individual parts and major assemblies are listed alphabetically by item name within the numbered functional groups.

(2) Assembly components and subassemblies are indented and listed alphabetically by item name under major assemblies.

b. This Repair Parts and Special Tools List is divided into the following sections:

(1) *Repair Parts-Section II*. A list of repair parts authorized for the performance of maintenance at the direct support, general support, and depot level.

(2) *Special Tools, Test and Support Equipment-Section III*. A list of special tools, test and support equipment authorized for the performance of maintenance at the direct support, general support, and depot level. (Not applicable)

(3) *Federal Stock Number and Reference Number Index-Section IV*. A list of Federal stock numbers followed by reference numbers in ascending alpha-numeric sequence cross-referenced to index number.

3. Explanation of columns

The following provides an explanation of columns in the tabular lists in Sections II and III:

a. *Source Maintenance, and Recoverability Codes (SMR), Column (1)*.

(1) Source Code, indicates the selection status and source for the listed item. Source codes used are:

<i>Code</i>	<i>Explanation</i>
P	Applied to repair parts which are stocked in or supplied from DSA/GSA or Army Supply system, and authorized for use at indicated maintenance categories.
M	Applied to repair parts which are not procured or stocked but are to be manufactured at indicated maintenance categories.

<i>Code</i>	<i>Explanation</i>
A	Applied to assemblies which are not procured or stocked as such but made up of two or more units, each of which carry individual stock numbers and descriptions and are procured and stocked and can be assembled by units at indicated maintenance categories.
X	Applied to parts and assemblies which are not procured or stocked, the mortality of which is normally below that of the applicable end item, and the failure of which should result in retirement of the end item from the supply system.
X1	Applied to repair parts which are not procured or stocked, the requirement for which will be supplied by use of the next higher assembly or components.
X2	Applied to repair parts which are not stocked. The indicated maintenance category requiring such repair parts will attempt to obtain them through cannibalization; if not obtainable through cannibalization, such repair parts will be requisitioned with supporting justification through normal supply channels.
C	Applied to repair parts authorized for local procurements. If not obtainable from local procurement, such repair parts will be requisitioned through normal supply channels with a supporting statement of non-availability from local procurement.
G	Applied to major assemblies that are procured with PEMA, Procurement Equipment (Missile Army) funds for initial issue only to be used as exchange assemblies at DSU and GSU maintenance level. These assemblies will not be stocked above DSU and GSU level or returned to depot supply level.

Note. Source code is not shown on common hardware items known to be readily available in Army supply channels and through local procurement.

(2) Maintenance Code, indicates the lowest category of maintenance authorized to install the listed item. The maintenance level codes are:

<i>Code</i>	<i>Explanation</i>
O	Organizational maintenance
F	Direct support maintenance
H	General support maintenance
D	Depot maintenance

(3) Recoverability Code, indicates whether unserviceable items should be returned for recovery or salvage. Items not coded are expendable. Recoverability codes are:

<i>Code</i>	<i>Explanation</i>
R	Applied to repair parts and assemblies which are economically repairable at DSU and GSU activities and normally are furnished by supply on an exchange basis.
T	Applied to high dollar value recoverable repair parts which are subject to special handling and are issued on an exchange basis. Such repair parts normally are repaired or overhauled at depot maintenance activities.
U	Applied to repair parts specifically selected for salvage by reclamation units because of precious metal content, critical materials, high dollar value reusable casings or castings.

(4) This column also lists, below the SMR code, an index number for each item in ascending numerical sequence, which is used to locate items in the publication when the Federal stock number and/or reference number is known.

b. Federal Stock Number, Column (2). This column indicates the Federal stock number for the item.

c. Description, Column (3). This column indicates the Federal item name and any additional description of the item required. A part number or other reference number is followed by the applicable five-digit Federal supply code for manufacturers in parentheses. Material required for manufacture or fabrication is identified.

d. Unit of Issue, Column (4). This column indicates the unit used as basis for issue, e.g., ea, pr, ft, yd, etc.

e. Quantity Incorporated in Unit Pack, Column (5). This column indicates the actual quantity contained in the unit pack.

f. Quantity Incorporated in Unit, Column (6). This column indicates the quantity of the item used in the functional group.

g. Thirty-Day DS/GS Maintenance Allowances, Columns (7) and (8).

(1) The allowance columns are divided into three subcolumns. Indicated in each subcolumn is the quantity of items authorized for the number of equipments supported. Items authorized for use as required but not for initial stockage are identified with an asterisk in the allowance column.

(2) The quantitative allowances for DS/GS levels of maintenance will represent initial stockage for a 30-day period for the number of equipments supported.

(3) Determination of the total quantity of parts required for maintenance of more than 100 of these equipments can be accomplished by converting the equipment quantity to a decimal factor by placing a decimal point before the next to last digit of the number to indicate hundredths, and multiplying the decimal factor by the parts quantity authorized in the 51-100 allowance column. Example, authorized allowance for 51-100 equipments is 40; for 150 equipments multiply 40 by 1.50 or 60 parts required.

h. One-Year Allowances Per 100 Equipments/Contingency Planning Purposes, Column (9). This column indicates the quantity required for distribution and contingency planning purposes. The range of items indicates total quantities of all authorized items required to provide for adequate support of 100 equipments for one year.

i. Depot Maintenance Allowance Per 100 Equipments, Column (10). This column indicates the quantity authorized for depot maintenance of 100 equipments. Items authorized for use but not for initial stockage are identified with an asterisk in the allowance column.

j. Illustration, Column (11).

(1) *Figure number.* Indicates the figure number of the illustration in which the item is shown.

(2) *Item number.* Indicates the callout number used to reference the item in the illustration.

4. Special Information

a. Repair parts mortality has been based on 1,000 hours of operation per year.

b. Parts which require manufacture or assembly at a category higher than that authorized for installation will indicate in the source column the higher category.

c. The following publications pertain to the welder and its components:

TM 5-3431-200-15 Operator, organizational, field and depot maintenance manual.

TM 5-3431-200-20P Organizational maintenance repair parts and special tool lists.

5. How to Locate Repair Parts

a. When Federal stock number or reference number is unknown:

(1) *First.* Using the table of contents, determine the functional group within which the repair part belongs.

(2) *Second.* Find the illustration covering the functional group to which the repair part belongs.

(3) *Third.* Identify the repair part on the illustration, and note the illustration figure and item number of the repair part.

(4) *Fourth.* Using the Repair Parts Listing, find the functional group to which the repair part belongs and locate the illustration figure and item number noted on the illustration.

b. When Federal stock number or reference number is known:

(1) *First.* Using the Index of Federal Stock Numbers and Reference Numbers, find the pertinent Federal stock number or reference number. This index is in ascending alphanumeric sequence cross-referenced to an index number.

(2) *Second.* Using the Repair Part Listing, find the index number referenced in the Index of Federal Stock Numbers and Reference Numbers.

6. Abbreviations

- ac..... alternating current
- amp..... ampere (s)
- AWG..... American Wire Gage
- dc..... direct current
- deg..... degree
- dia..... diameter (s)
- ea..... each
- ft..... feet (foot)
- grp..... group
- id..... inside diameter

- in..... inch (es)
- lg..... long
- mtg..... mounting
- No..... number
- od..... outside diameter (s)
- sh..... sheet
- thd..... thread (ed) (s)
- thk..... thick (ness)
- uf..... microfarad (s)
- u/w..... used with
- v..... volt (s)
- w..... width
- w/..... with

7. Federal Supply Codes for Manufacturers

<i>Code</i>	<i>Manufacture</i>
14655	Cornell-Dubilier Electric Corp.
28520	Heyman Mfg. Co.
5 6 2 8 9	Sprague Electric Co.
63026	Victor Equipment Co.
71279	Cambridge Thermionic Corp.
72794	Dzus Fastener Co. Inc.
75915	Littlefuse Inc.
77342	American Machine and Foundry Co.
88725	Westinghouse Electric Corp. Control Division

8. Report of Equipment Publications Improvements

Report of errors, omissions, and recommendations for improving this publication by the individual user is encouraged. Reports should be submitted on DA Form 2028 (Recommended Changes to DA Publications) and forwarded direct to Commanding General, U. S. Army Mobility Equipment Command, ATTN: AMSME-MPP, 4300 Goodfellow Boulevard, St. Louis, Mo. 63120.

(1) SMR CODE	(2) FEDERAL STOCK INDEX NUMBER	(3) DESCRIPTION	(4) USABLE ON CODE	(5) QTY INC IN UNIT PACK	(6) QTY INC IN UNIT	(7) 30-DAY DS MAINT ALLOWANCE (A)	(7) 21-50 DS MAINT ALLOWANCE (B)	(7) 51-100 DS MAINT ALLOWANCE (C)	(8) 30-DAY GS MAINT ALLOWANCE (A)	(8) 21-50 GS MAINT ALLOWANCE (B)	(8) 51-100 GS MAINT ALLOWANCE (C)	(9) 1-YR ALW PER 100 EQUIP CNTGCTY	(10) DEPOT MAINT ALW PER 100 EQUIP	(11) ILLUS- TRATION (A)	(11) ITEM NO. (B)
		SECTION II. REPAIR PARTS FOR DIRECT SUPPORT, GENERAL SUPPORT AND DEPOT MAINTENANCE													
00001		GROUP - 22 MISCELLANEOUS BODY, CHASSIS OR HULL, AND ACCESSORY ITEMS													
00002		2210 - DATA PLATES AND INSTRUCTION HOLDERS													
X2 F 00003	9905-807-3712	PLATE, IDENTIFICATION: CORPS OF ENGINEER TYPE A	EA	1											
X2 O 00004	3431-064-6459	PLATE, NAME: CONTROL 160P3340A (88725)	EA	1										2	20
F 00005	5305-014-8060	SCREW, TAPPING, THREAD FORMING: IDENTIFICATION PLATE MOUNTING	EA	4	*	*	*	*	*	*	*	*	*		
O 00006	5305-014-8060	SCREW, TAPPING, THREAD FORMING: NAME PLATE MOUNTING, CADMIUM OR ZINC PLATED; NO. 6-32 THD SIZE; 1/4 IN. LG	EA	4	*	*	*	*	*	*	*	*	*	2	22
00007		GROUP 44 - WELDING, METALIZING, METAL HEATING AND PLATING EQUIPMENT													
00008		4400 - GAS WELDING, FLAME CUTTING													
F O 00009	3431-509-2562	REGULATOR: ARGON GAS, TWO STAGES 2IN5945 (88725)	EA	1	*	*	2	*	*	2	6	2	1		
X1 00010	4730-287-1592	BALL, BEARING: CHECK, 0.3124 IN. DIA 1405-08 (63026)	EA	1										1	5
X1 00011		BODY 0701-6010 (63026)	EA	1											
X1 00012		BODY 1001-08 (63026)	EA	1											
X1 00013	4820-472-9955	BUTTON: SPRING SV390-02 (63026)	EA	1											
X1 00014		BUTTON: SPRING SV390-02 (63026)	EA	1											

(1) SMR CODE	(2) FEDERAL STOCK INDEX NUMBER	(3) DESCRIPTION	(4)	(5) QTY INC IN UNIT PACK	(6) QTY INC IN UNIT	(7) 30-DAY DS MAINT ALLOWANCE (A)	(8) 30-DAY GS MAINT ALLOWANCE (B)	(9) 1-YR ALW PER 100	(10) DEPOT MAINT ALW- PER 100	(11) ILLUS- TRATION (A)	(B)				
NO.		REFERENCE NO. & MFR. CODE	USABLE ON CODE	UNIT OF ISSUE		1-20	21-50	51-100	1-20	21-50	51-100	EQUIP CNTGCTY	100 EQUIP	FIG NO.	ITEM NO.
X1 00015		CONNECTION: INLET 1012-05 (63026)		EA	1										
X1 00016		CONNECTION: OUTLET 1012-05 (63026)		EA	1										
X1 00017		CONNECTION: OUTLET 50-20 (63026)		EA	1										
X1 00018		CUP: THORPE TUBE 1002-02 (63026)		EA	1									1	7
X1 00019	5310-766-9632	WASHER, SPLIT: FRICTION HIGH PRESSURE AND LOW PRESSURE 1408-44 (63026)		EA	2										
X1 00020		DIAPHRAGM ASSEMBLY: HIGH PRESSURE 0730-03 (63026)		EA	1										
X1 00021		CENTRALIZER 0733-03 (63026)		EA	1										
X1 00022	6680-888-0056	DIAPHRAGM 0731-03 (63026)		EA	1										
X1 00023		PLATE: DIAPHRAGM 0735-01 (63026)		EA	1										
X1 00024		DIAPHRAGM ASSEMBLY: LOW PRESURE 0730-02 (63026)		EA	1										
X1 00025		CENTRALIZER 0733-02 (63026)		EA	1										
X1 00026	6680-888-0055	DIAPHRAGM 0731-02 (63026)		EA	1										
X1 00027		NUT 1403-02 (63026)		EA	1										
X1 00028		PLATE: DIAPHRAGM 0735-02 (63026)		EA	1										
X1 00029		WASHER 1406-01 (63026)		EA	1										

(1) SMR CODE	(2) FEDERAL STOCK INDEX NUMBER	(3) DESCRIPTION	(4) UNIT OF ISSUE	(5) QTY INC IN UNIT PACK	(6) QTY INC IN UNIT	(7) 30-DAY DS MAINT ALLOWANCE (A)	(8) 30-DAY GS MAINT ALLOWANCE (A)	(9) 1-YR ALW PER 100	(10) DEPOT MAINT ALW- PER 100	(11) ILLUS- TRATION (A)	(B)	ITEM NO.
X1 00030	4310-607-8087	FILTER 930 (63026)	EA		2	1-20	21-50	51-100	1-20	21-50	51-100	
X1 00031	6685-072-6184	PRESSURE, DIAL: GAGE, BRASS CASE, 2 IN., 0 TO 4000 POUNDS 4000LB (63026)	EA		1							1 4
X1 00032		GASKET: THORPE TUBE, LOWER 1408-25 (63026)	EA		1							
X1 00033		GASKET: THORPE TUBE, UPPER 1408-82 (63026)	EA		1							1 2
X1 00034		GUIDE: SPRING 0760-01 (63026)	EA		1							
X1 00035		HOUSING: CAP, HIGH PRESSURE 0720-28 (63026)	EA		1							
X1 00036		HOUSING: CAP, LOW PRESSURE 0720-29 (63026)	EA		1							
X1 00037	1450-775-6226	NOZZLE: HIGH PRESSURE AND LOW PRESSURE VTS85-06 (63026)	EA		2							
X1 00038		NUT: BODY 1001-06 (63026)	EA		1							1 1
X1 00039		NUT, CAP 1403-05 (63026)	EA		1							
X1 00040		NUT: CAP, DIAPHRAGM PLATE 0737-03 (63026)	EA		1							
X1 00041		NUT: INLET 973-01A (63026)	EA		1							
X1 00042	5310-080-6694	NUT, FLAIN, CAP VTS85-09 (63026)	EA		1							
X1 00043	5330-798-3017	PACKING, PREFORMED 1407-21 (63026)	EA		1							1 6
X1 00044	5330-072-6185	PACKING, PREFORMED: THORPE TUBE 1407-11 (63026)	EA		1							

(1) SMR CODE	(2) FEDERAL STOCK INDEX NUMBER	(3) DESCRIPTION	(4)	(5) QTY INC IN UNIT PACK	(6) QTY INC IN UNIT	(7) 30-DAY DS MAINT ALLOWANCE (A)	(8) 30-DAY GS MAINT ALLOWANCE (B)	(9) 1-YR ALW PER 100	(10) DEPOT MAINT ALW PER 100	(11) ILLUS- TRATION (A)	(B)
NO.		REFERENCE NO. & MFR. CODE USABLE ON CODE	UNIT OF ISSUE			1-20 21-50 51-100	1-20 21-50 51-100	EQUIP CNTG	EQUIP	FIG NO.	ITEM NO.
X1 00045	5330-807-5490	RETAINER PACKING; HIGH PRESSURE AND LOW PRESSURE 0708-01 (63026)	EA		2						
X1 00046		RING: SLIP, DIAPHRAGM 0705-03 (63026)	EA		1						
X1 00047		SCREW: ADJUSTING VTS95-06 (63026)	EA		1						
X1 00048		SCREW: ADJUSTING, HIGH PRESSURE VTS40-13 (63026)	EA		1						
X1 00049		SEAT ASSEMBLY: HIGH PRESSURE 0740-02 (63026)	EA		1						
X1 00050		HOLDER: SEAT 0746-02 (63026)	EA		1						
X1 00051		SEAT UNIT V50-37-1 (63026)	EA		1						
X1 00052	5310-887-8043	NUT: SEAT V50-36 (63026)	EA		1						
X1 00053		SEAT SR47-02 (63026)	EA		1						
X1 00054	4530-888-0057	STEM, NEEDLE VALVE 0744-02 (63026)	EA		1						
X1 00055		SEAT ASSEMBLY: HIGH PRESSURE 0740-03 (63026)	EA		1						
X1 00056		HOLDER: SEAT 0746-02 (63026)	EA		1						
X1 00057		SEAT UNIT V60-03-1 (63026)	EA		1						
X1 00058	5310-887-8043	NUT: SEAT V50-36 (63026)	EA		1						
X1 00059	5330-882-0595	WASHER, NONMETALLIC VTS40-02D (63026)	EA		1						

(1) SMR CODE	(2) FEDERAL STOCK INDEX NUMBER	(3) DESCRIPTION	(4)	(5) QTY INC IN UNIT PACK	(6) QTY INC IN UNIT	(7) 30-DAY DS MAINT ALLOWANCE (A)	(8) 30-DAY GS MAINT ALLOWANCE (A)	(9) 1-YR ALW PER 100	(10) DEPOT MAINT ALW- PER 100	(11) ILLUS- TRATION (A)	(B)	ITEM NO.
		REFERENCE NO. & MFR. CODE USABLE ON CODE	UNIT OF ISSUE			1-20 21-50 51-100	1-20 21-50 51-100	EQUIP CNTG	EQUIP	FIG NO.		
X1 00060		STEM VTS5-02A (63026)	EA		1							
X1 00061	5340-803-7635	SPACER, RING: SLIP, DIAPHRAGM, LOW PRESSURE 0705-02 (63026)	EA		1							
X1 00062		SPRING: ADJUSTING SVJ90-03 (63026)	EA		1							
X1 00063		SPRING: ADJUSTING, HIGH PRESSURE SVJ90-03 (63026)	EA		1							
X1 00064	5340-888-0058	SPRING, HELICAL, COMPRESSION: VALVE PRESSURE AND LOW PRESSURE 0762-02 (63026)	EA		2							
X1 00065		SWIVEL: INLET 0970-0101 (63026)	EA		1							
X1 00066	6680-072-6186	TUBE: THROPE 1015-08 (63026)	EA		1						1	3
X1 00067	4820-567-0408	VALVE: SAFETY 0600-300 (63026)	EA		1							
X1 00068		VALVE ASSEMBLY, CONTROL 1014-01 (63026)	EA		1							
X1 00069	5310-843-5586	WASHER, LOCK: VALVE STEM VTS50-07B (63026)	EA		1							
	00070	4407 - CONTROL PANELS, HOUSING, CUBICLES										
X2 0 00071		CONTROL ASSEMBLU: AC/DC 9G9359 (88725)	EA		1							2
X2 0 00072		BASE: CABINET 827D037H02 (88725)	EA		1							2 24
X2 0 00073	5340-043-5621	BUSHING, RUBBER: CAPACITOR CLAMP TO CABINET MOUNTING, CADMIUM TO ZINC CHROMATE, NO. 6-32 THD SIZE, 1/4 IN. LG	EA		1		SEE GRP	4410				
X2 0 00074	5975-803-2536	BUSHING, STRAIN RELIEF: STRAIN, CURRENT SR8P1 (28520)	EA		1		SEE GRP	4408				

(1) SMR CODE INDEX NO.	(2) FEDERAL STOCK NUMBER	(3) DESCRIPTION REFERENCE NO. & MFR. CODE USABLE ON CODE	(4) UNIT OF ISSUE	(5) QTY INC IN UNIT PACK	(6) QTY INC IN UNIT	(7) 30-DAY DS MAINT ALLOWANCE (A)	(8) 30-DAY GS MAINT ALLOWANCE (A)	(9) 1-YR ALW PER 100	(10) DEPOT MAINT ALW- PER 100	(11) ILLUS- TRATION (A)	(12) ITEM NO.				
						1-20	21-50	51-100	1-20	21-50	51-100	EQUIP CNTG	100 EQUIP	FIG NO.	(B)
P 0 00075	3431-875-7655	CABLE ASSEMBLY: CURRENT 59C1598G13 (88725)	EA	1					SEE	GRP	4408				
P 0 00076	3431-875-7657	CABLE ASSEMBLY: GROUND 432C524G10 (88725)	EA	1					SEE	GRP	4408				
P 0 00077	3431-875-7656	CABLE ASSEMBLY: LINE 435C512G04 (88725)	EA	1					SEE	GRP	4408				
P 0 00078	5910-875-7888	CAPACITOR: ARMATURE RELAY 73P47306 (56289)	EA	2					SEE	GRP	4410				
X2 0 00079		CAPACITOR, FIXED, ELECTROLYTIC: WELDING GUN, RECEPTACLE TO LOAD RELAY BR30015 (14655)	EA	1											
X2 0 00080		CLAMP: CAPACITOR TO CABINET MOUNTING 1746613 (88725)	EA	1					SEE	GRP	4410				
X2 0 00081		CLAMP, LOOP 448A027H01 (88725)	EA	1										5	26
X2 0 00082		CLAMP, LOOP: CABLE TO BASE, RUBBER COVERED LOOP, 7/16 IN. ID. OF LOOP, 1/16 IN. THK MATERIAL, 5/8 IN. WIDE 11/16 IN. CENTER OF LOOP TO CENTER OF BOLT HOLE, U/W NO. 8 SCREW SIZE 1781453 (88725)	EA	4										2	33
X2 0 00083		CLIP, LOOP: NYLON FM10001, 3/8 IN. ID, 0.471 IN. CENTER OF LOOP TO CENTER OF HOLE, 0.227 IN. CENTER OF HOLE TO END, 0.050 IN. THK, 0.375 IN. W, 0.177 IN. ID OF HOLE 52D9036H05 (88752)	EA	2										2	3
X2 0R 00084	3431-446-1961	CONTRACTOR 31D9649COMBB00 (88725)	EA	1					SEE	GRP	4410				
X2 0 00085		ENCLOSURE 827D037G02 (88725)	EA	1										2	11
X2 0 00086		CABINET ASSEMBLY 827D037G01 (88725)	EA	1										2	7
X2 0 00087		GASKET 827D037H09 (88725)	EA	1										2	8

(1) SMR CODE	(2) FEDERAL STOCK INDEX NUMBER	(3) DESCRIPTION	(4) UNIT OF ISSUE	(5) QTY INC IN UNIT PACK	(6) QTY INC IN UNIT	(7) 30-DAY DS MAINT ALLOWANCE (A)	(7) 21-50 (B)	(7) 51-100 (C)	(8) 30-DAY GS MAINT ALLOWANCE (A)	(8) 21-50 (B)	(8) 51-100 (C)	(9) 1-YR ALW PER 100 EQUIP CNTG	(10) DEPOT MAINT ALW- PER 100 EQUIP	(11) ILLUS- TRATION (A)	(11) ITEM NO. (B)
X2 0 00088		GROMMET 307B188H05 (88725)	EA		1									2	9
X2 0 00089	5325-282-1884	STUD, TURNLOCK FASTENER AJ5-40 (72794)	EA		1									2	10
X2 0 00090		FISH PAPER: CONTRACTOR FRAME TO MOUNTING PANEL, 6-1/8 IN. LG. 3 IN. WIDE, 0.034 IN. THK 448A043H01 (88725)	EA		1				SEE	GRP	4410				
X2 0 00091		FISH PAPER: CONTRACTOR MOUNTING PANEL TO CONTROL PANEL, 9-1/8 IN. LG, 3 IN. WIDE, 0.034 IN. THK 448A043H02 (88725)	EA		1									4	17
X2 0 00092		FITTING: GAS IN 419A05AH01 (88725)	EA		1				SEE	GRP	4408				
X2 0 00093		FITTING: GAS OUT 419A049H01 (88725)	EA		1				SEE	GRP	4408				
P 0 00094	5920-280-4960	FUSE CARTRIDGE: LINE, 2 AMP 312002 (75915)	EA		4				SEE	GRP	4409				
P 0 00095	5920-065-3255	FUSE CARTRIDGE: MOTOR, LAMP 312001 (75915)	EA		2				SEE	GRP	4409				
P 0 00096	5920-556-0144	FUSE HOLDER: MOTOR AND LINE 427C612H02 (88725)	EA		3				SEE	GRP	4409				
X2 0 00097		KNOB 1228720 (88725)	EA		1				SEE	GRP	4411				
0 00098	5310-208-4074	NUT, PLAIN, HEXAGON: CAPACITOR CLAMP TO CABINET MOUNTING, CADMIUM PLATED, NO. 6-32 THD SIZE	EA		1				SEE	GRP	4410				
0 00099	5310-934-9757	NUT, PLAIN, HEXAGON: CLAMP SCREW TO BASE MOUNTING	EA		3	*	*	*	*	*	*	*	*	2	5
0 00100	5310-934-9757	NUT, PLAIN, HEXAGON: CONTROL PANEL TO CABINET MOUNTING	EA		2	*	*	*	*	*	*	*	*	5	7
0 00101	5310-934-9757	NUT, PLAIN, HEXAGON: LOOP CLAMP TO CABINET MOUNTING, CADMIUM OR ZINC CHROMATE. NO. 8-32 THD SIZE	EA		2	*	*	*	*	*	*	*	*	2	5
0 00102	5310-207-9272	NUT, PLAIN, HEXAGON: RECTIFIER TO CONTROL PANEL MOUNTING, CADMIUM OR ZINC PLATED, NO. 10-32 THD SIZE	EA		1				SEE	GRP	4413				

(1) SMR CODE	(2) FEDERAL STOCK INDEX NUMBER	(3) DESCRIPTION	(4)	(5) QTY INC IN UNIT PACK	(6) QTY INC IN UNIT	(7) 30-DAY DS MAINT ALLOWANCE (A)	(8) 30-DAY GS MAINT ALLOWANCE (A)	(9) 1-YR ALW PER 100	(10) DEPOT MAINT ALW- PER 100	(11) ILLUS- TRATION (A)	(B)	ITEM NO.			
		REFERENCE NO. & MFR. CODE USABLE ON CODE	UNIT OF ISSUE			1-20	21-50	51-100	1-20	21-50	51-100	EQUIP CNTG	100 EQUIP	FIG NO.	ITEM NO.
0 00103	5310-934-9757	NUT, PLAIN, HEXAGON: RELAY TO CABINET MOUNTING, CADMIUM OF ZINC CHROMATE, NO. 8-32 THD SIZE	EA		2				SEE	GRP	4410				
0 00104	5310-851-2674	NUT, PLAIN, HEXAGON: RESISTOR TO CONTROL PANEL MOUNTING, CADMIUM OR ZINC PLATED, 1/4-20 THD SIZE	EA		2				SEE	GRP	4411				
0 00105	5310-934-9757	NUT, PLAIN, HEXAGON: TERMINAL STRIP TO CABINET MOUNTING, CADMIUM OR ZINC CHROMATE, NO. 8-32 THD SIZE	EA		4				SEE	GRP	4408				
X2 0 00106		PANEL: CONTROL 637C249H01 (88725)	EA		1									5	5
X2 0 00107		PANEL: CONTROL, CONTRACTOR 637C251H01 (88725)	EA		1				SEE	GRP	4410				
M 0 00108		PANEL, SIDE: CONTROL MANUFACTURE FROM:	EA		1									2	27
P 0 00109	9515-331-0465	STEEL SHEET, CARBON, HOT ROLLED (14 - 1/2 IN. X 12- 7/16 IN. REQUIRED)	SH						SEE	GRP	9501				
X2 0 00110		PIPE: SOLENOID VALVE, INLET 419A015H02 (88725)	EA		1				SEE	GRP	4408				
X2 0 00111		PIPE: SOLENOID VALVE, OUTLET 419A015H07 (88725)	EA		1				SEE	GRP	4408				
P 0 00112	3431-875-7653	RECEPTACLE, WELDING GUN POWER SUPPLY 419A012H01 (88725)	EA		1				SEE	GRP	4408				
P 0 00113	5961-794-9862	RECTIFIER, SEMICONDUCTOR DEVICE 508C516G60 (88725)	EA		1				SEE	GRP	4413				
P 0 00114	5945-259-5683	RELAY ARMATURE: W/100V, DC COIL, 2 CIRCUIT FR11D (77342)	EA		1				SEE	GRP	4410				
P 0 00115	5945-875-7889	RELAY ASSEMBLY: LOAD 320B224G01 (88725)	EA		1				SEE	GRP	4410				
P 0 00116	5945-875-7884	RELAY: W/110V, DC COIL, 4 CIRCUIT 422A471H11 (88725)	EA		1				SEE	GRP	4410				
X2 0 00117	5975-889-5118	RELIEF: STRAIN, GROUND SR2M1 (28520)	EA		1				SEE	GRP	4408				

(1) SMR CODE	(2) FEDERAL STOCK INDEX NUMBER	(3) DESCRIPTION	(4)	(5) QTY INC IN UNIT PACK	(6) QTY INC IN UNIT	(7) 30-DAY DS MAINT ALLOWANCE (A)	(8) 30-DAY GS MAINT ALLOWANCE (A)	(9) 1-YR ALW PER 100	(10) DEPOT MAINT ALW- PER 100	(11) ILLUS- TRATION (A)	(12) ITEM NO.				
		REFERENCE NO. & MFR. CODE	USABLE ON CODE	UNIT OF ISSUE		1-20	21-50	51-100	1-20	21-50	51-100	EQUIP CNTG	100 EQUIP	FIG NO.	ITEM NO.
X2 0 00118		RELIEF: STRAIN, GUN 422A526G03 (88725)		EA	1				SEE	GRP	4408				
X2 0 00119		RELIEF: STRAIN, LINE SR6P1 (77342)		EA	1				SEE	GRP	4408				
P 0 00120	5905-875-7883	RESISTOR, ADJUSTABLE MOTOR VOLTAGE SUPPLY 422A473H05 (88725)		EA	1				SEE	GRP	4411				
P 0 00121	5905-875-7886	RESISTOR: ARMATURE RELAY TO LOAD RELAY 422A473H03 (88725)		EA	1				SEE	GRP	4411				
P 0 00122	5905-875-7887	RESISTOR: CONTROL PANEL 422A473H04 (88725)		EA	1				SEE	GRP	4411				
P 0 00123	5905-875-7890	RESISTOR: FUSE TO HOLDER TO LOAD RELAY 557D436H33 (88725)		EA	1				SEE	GRP	4411				
P 0 00124	5905-875-7881	RHEOSTAT, WELDING WIRE FEED CONTROL 422A460H01 (88725)		EA	1				SEE	GRP	4411				
0 00125	5305-614-3423	SCREW, MACHINE: CLAMP TO BASE MOUNTING CADMIUM OR ZINC PLATED, NO. 8-32 THD SIZE, 3/8 IN. LG		EA	3	*	*	*	*	*	*	*	*	2	25
0 00126	5305-577-5517	SCREW, MACHINE: CONTROL PANEL TO CABINET MOUNTING, CADMIUM OR ZINC PLATED, NO. 8-32 THD SIZE, 3/8 IN. LG		EA	2	*	*	*	*	*	*	*	*	5	25
0 00127	5305-939-9232	SCREW, MACHINE: LOOP CLAMP TO CABINET MOUNTING, CORROSION RESISTING, NO. 8-32 THD SIZE, 5/8 IN. LG		EA	1	*	*	*	*	*	*	*	*	2	25
0 00128	5305-622-9476	SCREW, MACHINE: RELAY TO CABINET MOUNTING, CADMIUM OR ZINC PLATED, NO. 8-32 THD SIZE, 5/8 IN LG		EA	2				SEE	GRP	4410				
0 00129	5305-543-2665	SCREW, MACHINE: RESISTOR TO CONTROL PANEL MTG, CADMIUM RO ZINC PLATED, 1/4-20 THD SIZE, 3/8 IN. LG		EA	2				SEE	GRP	4411				
0 00130	5305-622-9486	SCREW, MACHINE: SOLENOID VALVE TO CABINET MOUNTING, CADMIUM OR ZINC PLATED, NO. 10-32 THD SIZE, 1 1/4 IN. LG		EA	2				SEE	GRP	4410				
0 00131	5305-622-9478	SCREW, MACHINE: TERMINAL STRIP TO CABINET MOUNTING, CADMIUM OR ZINC PLATED, NO. 8-32 THD SIZE, 1 IN. LG		EA	1				SEE	GRP	4408				
0 00132	5305-151-0372	SCREW, MACHINE: TERMINAL STRIP TO CABINET MOUNTING, CADMIUM OR ZINC PLATED, NO. 8-32 THD SIZE, 1-1/8 IN. LG		EA	1				SEE	GRP	4408				

(1) SMR CODE	(2) FEDERAL STOCK INDEX NUMBER	(3) DESCRIPTION	(4)	(5) QTY INC IN UNIT PACK	(6) QTY INC IN UNIT	(7) 30-DAY DS MAINT ALLOWANCE (A)	(8) 30-DAY GS MAINT ALLOWANCE (B)	(9) 1-YR ALW PER 100	(10) DEPOT MAINT ALW- PER EQUIP	(11) ILLUS- TRATION (A)	(12) ITEM NO.
0 00133	5305-939-9232	SCREW, MACHINE: TERMINAL STRIP TO CABINET MOUNTING, CORROSION RESISTING, NO. 8-32 THD SIZE, 5/8 IN. LG	EA	2			SEE	GRP	4408		
0 00134	5305-017-2125	SCREW, TAPPING, THREAD CUTTING: RELAY AND ARMATURE RELAY TO PANEL MOUNTING, CADMIUM OR ZINC PLATED, NO. 6-32 THD SIZE, 3/4 IN. LG	EA	4			SEE	GRP	4410		
0 00135	5305-809-5978	SCREW, TAPPING, THREAD FORMING: CONTROL PANEL TO SIDE PANEL MOUNTING, CADMIUM OR ZINC PLATED, NO. 6-32 THD SIZE, 3/8 IN. LG	EA	2	*	*	*	*	*	*	5 3
0 00136	5305-016-9450	SCREW, TAPPING, THREAD FORMING: PANEL MOUNTING, CADMIUM OR ZINC PLATED, NO. 6-32 THD SIZE, 3/8 IN. LG	EA	12	*	*	*	*	*	*	2 26
0 00137	5305-809-5978	SCREW, TAPPING, THREAD FORMING: RESISTOR TO CONTROL PANEL MOUNTING, CADMIUM OR ZINC PLATED, NO. 6-32 THD SIZE, 3/8 IN. LG	EA	2			SEE	GRP	4411		
M 0 00138		SPACER: SOLENOID VALVE TO CABINET MOUNTING	EA	2			SEE	GRP	4410		
F 0 00139	5930-875-7882	SWITCH, CONTROL PANEL: LINE 429A051H02 (88725)	EA	1			SEE	GRP	4410		
P 0 00140	3431-858-3080	TERMINAL STRIP 32B1029H15 (88725)	EA	1			SEE	GRP	4408		
P 0 00141	3431-875-7658	VALVE, SOLENOID 422A472H02 (88725)	EA	1			SEE	GRP	4410		
0 00142	5310-809-8544	WASHER, FLAT: CLAMP SCREW TO BASE MOUNTING, CADMIUM OR ZINC CHROMATE, 0.188 IN. ID, 0.375 IN. OD, 0.049 IN. THK	EA	3	*	*	*	*	*	*	2 36
0 00143	5310-836-2458	WASHER, LOCK: CAPACITOR CLAMP TO CABINET MOUNTING, CADMIUM OR ZINC PLATED, 0.128 IN. ID, 0.239 IN. OD, 0.031 IN. THK	EA	1			SEE	GRP	4410		
0 00144	5310-045-3296	WASHER, LOCK: CLAMP SCREW TO BASE MOUNTING, CADMIUM OR ZINC CHROMATE, 0.194 IN. ID, 0.337 IN. OD, 0.047 IN. THK	EA	4	*	*	*	*	*	*	2 4
0 00145	5310-836-2458	WASHER, LOCK: CONTROL PANEL TO SIDE PANEL MOUNTING, CADMIUM OR ZINC CHROMATE, 0.128 IN. ID, 0.239 IN. OD, 0.031 IN. THK	EA	4	*	*	*	*	*	*	5 4

(1) SMR CODE	(2) FEDERAL STOCK INDEX NUMBER	(3) DESCRIPTION	(4)	(5) QTY INC IN UNIT PACK	(6) QTY INC IN UNIT	(7) 30-DAY DS MAINT ALLOWANCE (A)	(8) 30-DAY GS MAINT ALLOWANCE (A)	(9) 1-YR ALW PER 100	(10) DEPOT MAINT PER 100	(11) ILLUS- TRATION (A)	(B)	ITEM NO.			
		REFERENCE NO. & MFR. CODE	USABLE ON CODE	UNIT OF ISSUE		1-20	21-50	51-100	1-20	21-50	51-100	EQUIP CNTG	EQUIP	FIG NO.	ITEM NO.
0 00146	5310-045-3299	WASHER, LOCK: RECTIFIER TO CONTROL PANEL MOUNTING, CADMIUM OR ZINC PLATED, 0.168 IN. ID, 0.296 IN. OD, 0.040 IN. THK		EA	1				SEE	GRP	4413				
0 00147	5310-045-3296	WASHER, LOCK: RELAY TO CABINET MOUNTING, CADMIUM OR ZINC CHROMATE, 0.194 IN. ID, 0.337 IN. OD, 0.047 IN. THK		EA	2				SEE	GRP	4410				
0 00148	5310-637-9541	WASHER, LOCK: RESISTOR TO CONTROL PANEL MOUNTING, CADMIUM OR ZINC PLATED, 0.382 IN. ID, 0.688 IN. OD, 0.094 IN. THK		EA	2				SEE	GRP	4411				
0 00149	5310-045-3299	WASHER, LOCK: SOLENOID VALVE TO CABINET MOUNTING, CADMIUM OR ZINC PLATED, 0.168 IN. ID, 0.296 IN. OD, 0.040 IN. THK		EA	2				SEE	GRP	4410				
0 00150	5310-527-3288	WASHER, LOCK: TERMINAL STRIP TO CABINET MTG, CADMIUM OR ZINC CHROMATE, 0.200 IN. ID, 0.373 IN. OD, 0.023 IN. THK		EA	1				SEE	GRP	4408				
M 0 00151		WIRING HARNESS: CONTROL MANUFACTURE FROM:		EA	1										
X2 0 00152	5940-283-5280	TERMINAL, LUG: COPPER, TINNED FINISH, NO. 16-14 AWG, FOR NO. 5 OR 6 SCREW SIZE		EA	32										
P 0 00153	6145-160-4968	WIRE, ELECTRICAL (4 FT. REQUIRED)		FT					SEE	GRP	9501				
P 0 00154	6145-170-3521	WIRE, ELECTRICAL (24 IN. REQUIRED)		FT					SEE	GRP	9501				
P 0 00155	6145-170-6872	WIRE, ELECTRICAL (4 FT. REQUIRED)		FT					SEE	GRP	9501				
P 0 00156	6145-160-4968	WIRE, ELECTRICAL (24 IN. REQUIRED)		FT					SEE	GRP	9501				
P 0 00157	6145-235-1007	WIRE, ELECTRICAL (24 IN. REQUIRED)		FT					SEE	GRP	9501				
P 0 00158	6145-295-0806	WIRE, ELECTRICAL (4 FT. REQUIRED)		FT					SEE	GRP	9501				
P 0 00159	6145-295-1271	WIRE, ELECTRICAL (4 FT. REQUIRED)		FT					SEE	GRP	9501				
P 0 00160	6145-295-1273	WIRE, ELECTRICAL (4 FT. REQUIRED)		FT					SEE	GRP	9501				
0 00161		4408 - CONNECTING DEVICES													
X2 0 00162	5975-803-2536	BUSHING, STRAIN REFLEF: STRAIN, CURRENT SR8P1 (28520)		EA	1									2	39

(1) SMR CODE	(2) FEDERAL STOCK INDEX NUMBER	(3) DESCRIPTION	(4)	(5) QTY INC IN UNIT PACK	(6) QTY INC IN UNIT	(7) 30-DAY DS MAINT ALLOWANCE (A)	(7) 21-50 (B)	(7) 51-100 (C)	(8) 30-DAY GS MAINT ALLOWANCE (A)	(8) 21-50 (B)	(8) 51-100 (C)	(9) 1-YR ALW PER 100	(10) DEPOT MAINT ALW- PER EQUIP	(11) ILLUS- TRATION (A)	(11) ITEM NO. (B)
		REFERENCE NO. & MFR. CODE USABLE ON CODE	UNIT OF ISSUE			1-20	21-50	51-100	1-20	21-50	51-100	EQUIP CNTGCTY	100 EQUIP	FIG NO.	ITEM NO.
P 0 00163	3431-875-7624	CABLE ASSEMBLY: CURRENT 310B142G01 (88725)	EA	1		*	*	2	*	*	2	6	5	6	14
P 0 00164	3431-875-7655	CABLE ASSEMBLY: CURRENT 59C1598G13 (88725)	EA	1		*	*	2	*	*	2	6	5	2	28
P 0 00165	3431-875-7657	CABLE ASSEMBLY: GROUND 432C524G10 (88725)	EA	1		*	*	2	*	*	2	6	5	2	30
P F 00166	3431-875-7626	CABLE ASSEMBLY: GUN TO TERMINAL STRIP 311B796G03 (88725)	EA	1		*	*	2	*	*	2	6	5	6	17
P 0 00167	3431-875-7656	CABLE ASSEMBLY: LINE 435C512G04 (88725)	EA	1		*	*	2	*	*	2	6	5	2	1
X2 0 00168		FITTING: GAS IN 419A050H01 (88725)	EA	1											29
X2 0 00169		FITTING: GAS OUT 419A049H01 (88725)	EA	1											35
P 0 00170	3431-875-7625	HOSE ASSEMBLY: GAS 432C506G01 (88725)	EA	1		*	*	2	*	*	2	6	5	6	15
0 00171	4730-014-4574	LOCKNUT, PIPE: GAS INLET AND OUTLET PIPE TO CABINET MTG, ZINC PLATED, 1/8-27 THD SIZE	EA	2		*	*	*	*	*	*	*	*	*	4
0 00172	4730-014-0561	LOCKNUT, PIPE: GUN RELIEF STRAIN MTG, 1/2-14 THD SIZE	EA	1		*	*	*	*	*	*	*	*	*	34
0 00173	5310-934-9757	NUT, FLAIN, HEXAGON; TERMINAL STRIP TO CABINET MTG, CADMIUM OR ZINC CHROMATE, NO. 8-32 THD SIZE	EA	4		*	*	*	*	*	*	*	*	*	5
X2 0 00174		PIPE: SOLENOID VALVE, INLET 419A015H02 (88725)	EA	1											5
X2 0 00175		PIPE: SOLENOID VALVE, OUTLET 419A015H07 (88725)	EA	1											7
P 0 00176	3431-875-7653	RECEPTACLE, WELDING GUN POWER SUPPLY 419A012H401 (88725)	EA	1		*	*	2	*	*	2	6	5	2	23
0 00177	4730-014-0561	LOCKNUT, PIPE: RECEPTACLE MTG, 1/2-14 THD SIZE	EA	1		*	*	*	*	*	*	*	*	*	34
X2 0 00178	5975-889-5118	RELIEF: STRAIN, GROUND SR2M1 (28520)	EA	1											31

(1) SMR CODE	(2) FEDERAL STOCK INDEX NUMBER	(3) DESCRIPTION	(4) UNIT OF ISSUE	(5) QTY INC IN UNIT PACK	(6) QTY INC IN UNIT	(7) 30-DAY DS MAINT ALLOWANCE (A) (B) (C)	(8) 30-DAY GS MAINT ALLOWANCE (A) (B) (C)	(9) 1-YR ALW PER 100	(10) DEPOT MAINT ALW- PER 100	(11) ILLUS- TRATION (A) (B)	ITEM NO.
X2 0 00179		RELIEF: STRAIN, GUN 422A526G03 (88725)	EA		1						2 16
X1 00180		LOCKNUT: STRAIN RELIEF, 3/8 IN. CONDUIT 422A526H02 (88725)	EA		1						
X1 00181		SEALING GRIP: STRAIN RELIEF 422A526H04 (88725)	EA		1						
X2 0 00182		RELIEF: STRAIN, LINE SR6P1 (77342)	EA		1						2 2
0 00183	5305-622-9478	SCREW, MACHINE: TERMINAL STRIP TO CABINET MTG, CADMIUM OR ZINC PLATED, NO. 8-32 THD SIZE, 1 IN. LG	EA		1	*	*	*	*	*	2 12
0 00184	5305-151-0372	SCREW, MACHINE: TERMINAL STRIP TO CABINET MTG, CADMIUM OR ZINC PLATED, NO. 8/32 THD SIZE 1 1/8 IN. LG	EA		1	*	*	*	*	*	2 14
0 00185	5305-939-9232	SCREW, MACHINE: TERMINAL STRIP TO CABINET MTG, CORROSION RESISTING, NO. 8-32 THD SIZE, 5/8 IN. LG	EA		2	*	*	*	*	*	2 15
P 0 00186	3431-858-3080	TERMINAL STRIP 32B1029H15 (88725)	EA		1	*	*	2	*	*	2 6
0 00187	5310-045-3296	WASHER, LOCK: TERMINAL STRIP MTG. CADMIUM OR ZINC CHROMATE, 0.194 IN. ID, 0.375 IN. OD, 0.049 IN. THK	EA		1	*	*	*	*	*	2 13
0 00188	5310-527-3288	WASHER, LOCK: TERMINAL STRIP TO CABINET MTG, CADMIUM OR ZINC CHROMATE, 0.200 IN. ID, 0.373 IN. OD, 0.023 IN. THK	EA		1	*	*	*	*	*	2 4
00189		4409 - PROTECTIVE DEVICES, ELECTRICAL									
P 0 00190	5920-280-4960	FUSE, CARTRIDGE: LINE, 2 AMP 312002 (75915)	EA		4	3	6	12	3	6	12 144 80 2 19
P 0 00191	5920-065-3255	FUSE, CARTRIDGE: MOTOR LAMP 312001 (75915)	EA		2	2	4	8	2	4	8 96 40 2 18
P 0 00192	5920-556-0144	FUSE HOLDER: MOTOR AND LINE 427C612H02 (88725)	EA		3	*	*	2	*	*	2 6 5 2 17

(1) SMR CODE INDEX NO.	(2) FEDERAL STOCK NUMBER	(3) DESCRIPTION REFERENCE NO. & MFR. CODE USABLE ON CODE	(4) UNIT OF ISSUE	(5) QTY INC IN UNIT PACK	(6) QTY INC IN UNIT	(7) 30-DAY DS MAINT ALLOWANCE (A)	(7) 21-50 (B)	(7) 51-100 (C)	(8) 30-DAY GS MAINT ALLOWANCE (A)	(8) 21-50 (B)	(8) 51-100 (C)	(9) 1-YR ALW PER 100 EQUIP CNTGCTY	(10) DEPOT MAINT ALW- PER EQUIP	(11) ILLUS- TRATION (A)	(11) (B)	ITEM NO.
00193		4410 - SWITCHING, TIMING AND SPEED CONTROL														
P 0 00194	5910-875-7888	CAPACITOR: ARMATURE RELAY 1600323 (88725)	EA	2	2	2	4	2	2	4	48	40	5	18		
X2 0 00195		CAPACITOR, FIXED, ELECTROLYTIC: WELDING GUN RECEPTACLE TO LOAD RELAY BR30015 (14655)	EA	1									3	11		
P F 00196	5910-875-7880	CAPACITOR: GUN 121P47302S2 (56289)	EA	1	*	*	2	*	*	2	6	20	6	18		
P 0 00197	5910-668-3725	CAPACITOR: INSULATED TERMINAL TO ARMATURE RELAY, 1 UF, 400V*20 %, DC FJ4P1 (14655)	EA	1	2	2	3	2	2	3	36	20	5	24		
X2 0 00198		CLAMP: CAPACITOR TO CABINET MTG 1746613 (88725)	EA	1									3	14		
X2 OR 00199	3431-446-1961	CONTACTOR 31D9649COMBB00 (88725)	EA	1									4			
X1 00200		BASE 1419592 (88725)	EA	1												
X1 00201		BOX ASSEMBLY: ARC 1490517 (88725)	EA	1									4	2		
P F 00202	5950-875-7883	COIL: BLACK NO. 2, COMB B 1490640 (88725)	EA	1	*	*	2	*	*	2	6	10	4	13		
X1 00203		COIL: BLOW OUT ARC HORN ASSEMBLY 1490509 (88725)	EA	1												
X1 00204		CONNECTOR 1257356 (88725)	EA	1												
P F 00205	6110-525-3067	CONTACT, MOVING 1490515 (88725)	EA	1	*	*	2	*	*	2	6	10	4	3		
P F 00206	6110-525-3068	CONTACT, STATIONARY 1490516 (88725)	EA	1	*	*	2	*	*	2	6	10	4	26		
X1 00207		CORE 1257371 (88725)	EA	1												

(1) SMR CODE	(2) FEDERAL STOCK INDEX NUMBER	(3) DESCRIPTION	(4)	(5) QTY INC IN UNIT PACK	(6) QTY INC IN UNIT	(7) 30-DAY DS MAINT ALLOWANCE (A)	(8) 30-DAY GS MAINT ALLOWANCE (A)	(9) 1-YR ALW PER 100	(10) DEPOT MAINT ALW- PER 100	(11) ILLUS- TRATION (A)	(B)	ITEM NO.				
		REFERENCE NO. & MFR. CODE	USABLE ON CODE	UNIT OF ISSUE		1-20	21-50	51-100	1-20	21-50	51-100	EQUIP CNTG	100 EQUIP	FIG NO.		
X1 00208		FRAME ASSEMBLY 1289431 (88725)		EA	1											
X1 00209		HOLDER: CONTACT SPRING 1419587 (88725)		EA	1											
X1 00210	5970-367-1250	INSULATION: TUBE 1257373 (88725)		EA	1											
X1 00211		LATCH 1419590 (88725)		EA	1											
X1 00212		PIN: DOWEL 552D181H45 (88725)		EA	3											
X1 00213		PLATE: ARMATURE 1257344 (88725)		EA	1									4	5	
X1 00214		PLATE: NAME, CONTACTOR 55955 (88725)		EA	1											
X1 00215		PLATE: NON-MAGNETIC 1257402 (88725)		EA	1											
X1 00216	5945-367-1227	POLE FACE 1257462 (88725)		EA	1											
X1 00217	5945-367-1226	POLE PIECE 1257366 (88725)		EA	1											
X1 00218	5945-366-7377	POLE PIECE 1257367 (88725)		EA	1											
X1 00219		RETAINING WASHER 1486999 (88725)		EA	1									4	14	
X1 00220	5305-253-5609	SCREW, DRIVE: NAME PLATE, CADMIUM OR ZINC PLATED, NO. 2, 1/8 IN. LG		EA	2											
X1 00221	5305-286-1494	SCREW, MACHINE: ARMATURE PLATE MTG, CADMIUM OR ZINC PLATED, 1/4-20 THD SIZE, 1/2 IN. LG		EA	2									4	6	
X1 00222	5305-017-3397	SCREW, MACHINE: CADMIUM OR ZINC, PLATED, 1/4-20 THD SIZE, 5/8 IN. LG		EA	1											

(1) SMR CODE	(2) FEDERAL STOCK INDEX NUMBER	(3) DESCRIPTION	(4)	(5) QTY INC IN UNIT PACK	(6) QTY INC IN UNIT	(7) 30-DAY DS MAINT ALLOWANCE (A)	(7) 30-DAY DS MAINT ALLOWANCE (B)	(7) 30-DAY DS MAINT ALLOWANCE (C)	(8) 30-DAY GS MAINT ALLOWANCE (A)	(8) 30-DAY GS MAINT ALLOWANCE (B)	(8) 30-DAY GS MAINT ALLOWANCE (C)	(9) 1-YR ALW PER 100	(10) DEPOT MAINT ALW- PER 100	(11) ILLUS- TRATION (A)	(11) ITEM NO. (B)
NO.		REFERENCE NO. & MFR. CODE USABLE ON CODE	UNIT OF ISSUE			1-20	21-50	51-100	1-20	21-50	51-100	EQUIP CNTGCTY	100 EQUIP	FIG NO.	
X1 00223	5305-017-7355	SCREW, MACHINE: COIL MTG, CADMIUM OR ZINC PLATED, 1/4-28 THD SIZE, 1/2 IN. LG	EA		1									4	10
X1 00224	5305-952-0760	SCREW, MACHINE: CONTACT MTG, CADMIUM OR ZINC PLATED, 1/4-28 THD SIZE, 3/8 IN. LG	EA		2									4	27
X1 00225	5305-616-4831	SCREW, MACHINE: CONTACTOR TO MTG PLATE, CADMIUM OR ZINC PLATED, NO. 10-32 THD SIZE, 3/4 IN. LG	EA		2									4	23
X1 00226	5305-954-8151	SCREW, MACHINE: LEAD ATTACHING, BRASS, NO. 10-32 THD SIZE, 1/4 IN. LG	EA		1									4	24
X1 00227		SHUNT 1688647G02 (88725)	EA		1										
P F 00228	5340-512-9403	SPRING, CONTACT 1490698 (88725)	EA		1	*	*	2	*	*	2	6	10	4	4
P F 00229	5340-417-8878	SPRING, KICK-OUT 1289441 (88725)	EA		2	2	2	4	2	2	4	48	20	4	9
X1 00230	5945-366-7343	STOP: ARMATURE 1257363 (88725)	EA		1										
X1 00231		STUD 552D181H55 (88725)	EA		1										
X1 00232		SUPPORT: KICK-OUT SPRING 1257399 (88725)	EA		1										
X1 00233		TERMINAL: FRONT CONNECTION 138586602 (88725)	EA		2									4	1
X1 00234	5310-812-0992	WASHER, FLAT: COIL MTG, CADMIUM PLATED, 1/4 IN. ID, 1 1/8 IN. OD, 0.063 IN. THK	EA		1									4	12
X1 00235	5310-044-6179	WASHER, FLAT: CONTACT MOUNTING, CADMIUM OR ZINC CHROMATE, 0.255 IN. ID, 0.500 IN. OD, 0.049 IN. THK	EA		2									4	8
X1 00236	5310-167-0765	WASHER, FLAT: CONTACTOR SCREW MOUNTING, CADMIUM PLATED, 0.194 IN. ID, 7/8 IN. OD, 1/16 IN. THK	EA		2									4	21
X1 00237		WASHER: INSULATION 1257374 (88725)	EA		2										

(1) SMR CODE INDEX NO.	(2) FEDERAL STOCK NUMBER	(3) DESCRIPTION REFERENCE NO. & MFR. CODE USABLE ON CODE	(4) UNIT OF ISSUE	(5) QTY INC IN UNIT PACK	(6) QTY INC IN UNIT	(7) 30-DAY DS MAINT ALLOWANCE (A) (B) (C)	(8) 30-DAY OS MAINT ALLOWANCE (A) (B) (C)	(9) 1-YR ALW EQUIP CNTGCTY	(10) DEPOT MAINT EQUIP 100	(11) ILLUS- TRATION (A) (B)	FIG NO.	ITEM NO.
X1 00238	5310-550-1130	WASHER, LOCK: CADMIUM OR ZINC CHROMATE, 0.262 IN. ID, 0.469 IN. OD, 0.025 IN. THK	EA	1							4	11
X1 00239	5310-582-5965	WASHER, LOCK: CONTACT MOUNTING, CADMIUM OR ZINC CHROMATE, 0.255 IN. ID, 0.493 IN. OD, 0.062 IN. THK	EA	2							4	7
X1 00240	5310-012-1841	WASHER, LOCK: CONTACTOR SCREW MOUNTING, CADMIUM OR ZINC PLATED, 0.168 IN. ID, 0.296 IN. OD, 0.040 IN. THK	EA	2							4	22
X1 00241	5310-527-3288	WASHER, LOCK: LEAD SCREW ATTACHING CADMIUM OR ZINC CHROMATE, 0.200 IN. ID, 0.373 IN. OD, 0.023 IN. THK	EA	3							4	25
X1 00242		WASHER: MICA 208A560H05 (88725)	EA	1								
X2 0 00243		FISH PAPER: CONTACTOR FRAME TO MOUNTING PANEL, 6-1/16 IN. LG, 3 IN. W, 0.034 IN. THK 448A043H01 (88725)	EA	1							4	20
M 0 00244		LEAD, ELECTRICAL: RELAY GROUND MANUFACTURE FROM:	EA	1							5	19
X2 0 00245	5940-549-1973	TERMINAL, LUG: NO. 16 TO NO. 22 AWG, 25/32 IN. LG, 7/16 IN. W, 1/4 IN. THK	EA	2								
P 0 00246	6145-164-7026	WIRE, ELECTRICAL (6 IN. REQUIRED)	FT				SEE	GRP	9501			
0 00247	5310-208-4074	NUT, PLAIN, HEXAGON: CAPACITOR CLAMP TO CABINET MOUNTING, CADMIUM PLATED, NO. 6-32 THD SIZE	EA	1	*	*	*	*	*	*	3	12
0 00248	5310-934-9757	NUT, PLAIN, HEXAGON: RELAY TO CABINET MOUNTING, CADMIUM OR ZINC CHROMATE, NO. 8-32 THD SIZE	EA	2	*	*	*	*	*	*	3	1
0 00249		NUT: WELL, CONTACTOR MOUNTING, RUBBER W/BRASS THREADED INSET 3/8-16 THD SIZE, SHOULDERED, 3/4 IN. OD, OF SMALL SHOULDER, 11/16 IN. HIGH, 1 3/4 IN. OD, OF LARGE SHOULDER, 3/8 IN. HIGH, 1-1/16 IN. OVERALL 419A065H01 (88725)	EA	2	*	*	*	*	*	*	4	18
X2 0 00250		PANEL: CONTROL, CONTACTOR 637C251H01	EA	1							4	19
P 0 00251	5945-259-5683	RELAY, ARMATURE: W/110V, DC COIL, 2 CIRCUIT PR11D (77342)	EA	1	*	*	2	*	*	2	6	5 5 20

(1) SMR CODE	(2) FEDERAL STOCK INDEX NUMBER	(3) DESCRIPTION	(4) UNIT OF ISSUE	(5) QTY INC IN UNIT PACK	(7) 30-DAY DS MAINT ALLOWANCE			(8) 30-DAY GS MAINT ALLOWANCE			(9)	(10)	(11)	
					(A)	(B)	(C)	(A)	(B)	(C)	1-YR ALW PER 100	DEPOT MAINT ALW- PER 100	ILLUS- TRATION (A)	ITEM NO. (B)
P 0 00252	5945-875-7889	RELAY ASSEMBLY: LOAD 320B224G01 (88725)	EA	1	*	*	2*	*	2	6	5	3	3	
P 0 00253	5945-875-7884	RELAY: W/110V, DC COIL, 4 CIRCUIT 422AX71H11 (88725)	EA	1	*	*	2	*	*	2	6	5	5	27
X1 00254		COIL 320B222H01 (88725)	EA	1										
X1 00255		COIL ASSEMBLY: RELAY 320B222G01 (88725)	EA	1										
X1 00256		RELAY: SPST, ONE OPEN CONTACT FR2949 (77342)	EA	1										
X1 00257		TERMINAL 320B222H02 (88725)	EA	1										
0 00258	5305-021-5453	SCREW, CAP, HEXAGON HEAD: CONTACTOR MOUNTING, CADMIUM OR ZINC PLATED, 3/8-16 THD SIZE, 1 1/4 IN. LG	EA	2	*	*	*	*	*	*	*	*	4	15
0 00259	5305-543-5621	SCREW, MACHINE: CAPACITOR CLAMP TO CABINET MOUNTING, CADMIUM OR ZINC CHROMATE, NO. 6-32 THD SIZE, 1/4 IN. LG	EA	1	*	*	*	*	*	*	*	*	3	15
X2 0 00260	5305-543-5621	SCREW, MACHINE: INSULATED TERMINAL MOUNTING	EA	1									5	22
0 00261	5305-622-9476	SCREW, MACHINE: RELAY TO CABINET MOUNTING, CADMIUM OR ZINC CHROMATE, NO. 8-32 THD SIZE, 5/8 IN. LG	EA	2	*	*	*	*	*	*	*	*	3	16
0 00262	5305-622-9486	SCREW, MACHINE: SOLENOID VALVE TO CABINET MTG, CADMIUM OR ZINC PLATED, NO. 10-32 THD SIZE, 1-1/4 IN. LG	EA	2	*	*	*	*	*	*	*	*	3	10
X2 0 00263	5305-017-2125	SCREW, TAPPING, THREAD CUTTING: RELAY AND ARMATURE RELAY TO PANEL MTG, CADMIUM OR ZINC PLATED, NO. 6-32 THD SIZE, 3/4 IN. LG	EA	4									5	28
M 0 00264		SPACER: SOLENOID VALVE TO CABINET MANUFACTURE FROM:	EA	2									3	8
P 0 00265	4710-162-1018	PIPE, STEEL (13/16 IN. REQUIRED FOR EACH SPACER)	FT					SEE	GRP	9501				
P 0 00266	5930-875-7882	SWITCH, CONTROL PANEL: LINE 429A051H02 (88725)	EA	1	*	*	2	*	*	2	6	5	2	32

(1) SMR CODE INDEX NO.	(2) FEDERAL STOCK NUMBER	(3) DESCRIPTION	(4) UNIT OF ISSUE	(5) QTY INC IN UNIT PACK	(6) QTY INC IN UNIT	(7) 30-DAY DS MAINT ALLOWANCE (A) (B) (C)	(8) 30-DAY OS MAINT ALLOWANCE (A) (B) (C)	(9) 1-YR ALW PER EQUIP CNTG	(10) DEPOT MAINT PER EQUIP	(11) ILLUS- MAINT TRATION FIG NO.	(12) ITEM NO.				
P F 00267	3431-875-7631	SMITCH, INCHING 301B663H09 (88725)	EA	1	*	*	2	*	*	2	6	5	6	20	
P F 00268	5930-875-7879	SMITCH TRIGGER 44A3880H17 (88725)	EA	1	*	*	2	*	*	2	6	5	6	19	
X2 0 00269		TERMINAL: INSULATED 194F6 (71279)	EA	1										5	23
P 0 00270	3431-875-7658	VALVE, SOLENOID 422A473H02 (88725)	EA	1	*	*	2	*	*	2	6	5	3	6	
0 00271	5310-082-1404	WASHER, FLAT: INSULATED TERMINAL MOUNTING, CADMIUM OR ZINC CHROMATE, 0.156 IN. ID, 0.375 IN. OD, 0.049 IN. THK	EA	1	*	*	*	*	*	*	*	*	*	5	21
0 00272	5310-836-2458	WASHER, LOCK: CAPACITOR CLAMP TO CABINET MTG, CADMIUM OR ZINC PLATED, 0.128 IN. ID, 0.239 IN. OD, 0.031 IN. THK	EA	1	*	*	*	*	*	*	*	*	*	3	13
0 00273	5310-637-9541	WASHER, LOCK: CONTACTOR SCREW MTG, 0.382 IN. ID, 0.688 IN. OD, 0.094 IN. THK	EA	2	*	*	*	*	*	*	*	*	*	4	16
0 00274	5310-836-2458	WASHER, LOCK: INSULATED TERMINAL MTG	EA	1	*	*	*	*	*	*	*	*	*	5	4
0 00275	5310-045-3296	WASHER, LOCK: RELAY TO CABINET MTG, CADMIUM OR ZINC CHROMATE, 0.194 IN. ID, 0.337 IN. OD, 0.047 IN. THK	EA	2	*	*	*	*	*	*	*	*	*	3	2
0 00276	5310-045-3299	WASHER, LOCK: SOLENOID VALVE TO CABINET MTG, CADMIUM OR ZINC PLATED, 0.168 IN. ID, 0.296 IN. OD, 0.040 IN. THK	EA	2	*	*	*	*	*	*	*	*	*	3	9
00277		4411 - RESISTORS													
X2 0 00278		KNOB 1228720 (88725)	EA	1										2	21
0 00279	5310-934-9757	NUT, FLAIN, HEXAGON: RESISTOR TO CONTROL PANEL MTG, CADMIUM OR ZINC CHROMATE, WD. 8-32 THD SIZE	EA	1	*	*	*	*	*	*	*	*	*	5	7
0 00280	5310-851-2674	NUT, FLAIN, HEXAGON: RESISTOR TO CONTROL PANEL MTG, CADMIUM OR ZINC PLATED, 1/4-20 THD SIZE	EA	2	*	*	*	*	*	*	*	*	*	5	8
P 0 00281	5905-875-7883	RESISTOR, ADJUSTABLE MOTOR VOLTAGE SUPPLY: CONTROL PANEL 422A60H5 (88725)	EA	1	*	2	2	*	2	2	12	20	5	16	
P 0 00282	5905-875-7886	RESISTOR: ARMATURE RELAY TO LOAD RELAY 422A473H03 (88725)	EA	1	*	2	2	*	2	2	12	20	5	14	

(1) SMR CODE INDEX NO.	(2) FEDERAL STOCK NUMBER	(3) DESCRIPTION REFERENCE NO. & MFR. CODE USABLE ON CODE	(4) UNIT OF ISSUE	(5) QTY INC IN UNIT PACK	(6) QTY INC IN UNIT	(7) 30-DAY DS MAINT ALLOWANCE (A) (B) (C)	(8) 30-DAY GS MAINT ALLOWANCE (A) (B) (C)	(9) 1-YR ALW PER EQUIP CNTGCTY	(10) DEPOT MAINT ALW- PER EQUIP	(11) ILLUS- TRATION (A) (B) FIG NO. ITEM NO.					
P 0 00283	5905-875-7887	RESISTOR: CONTROL PANEL 422A473H04 (88725)	EA	1	*	2	2	*	2	2	12	20	5	11	
P 0 00284	5905-875-7890	RESISTOR: FUSE HOLDER TO LOAD RELAY 557D436H33 (88725)	EA	1	*	2	2	*	2	2	12	20	2	38	
P 0 00285	5905-875-7881	RHEOSTAT, WELDING WIRE FEED CONTROL 422A460H01 (88725)	EA	1	*	2	2	*	2	2	12	20	2	37	
0 00286	5305-984-6203	SCREW, MACHINE: RESISTOR TO CONTROL PANEL MTG, CADMIUM OR ZINC PLATED, NO. 8-32 THD SIZE, 2 1/2 IN. LG	EA	1	*	*	*	*	*	*	*	*	*	5	13
0 00287	5305-543-2665	SCREW, MACHINE: RESISTOR TO CONTROL PANEL MTG, CADMIUM OR ZINC PLATED, 1/4-20 THD SIZE, 3/8 IN. LG	EA	2	*	*	*	*	*	*	*	*	*	5	15
0 00288	5305-809-5978	SCREW, TAPPING, THREAD FORMING: RESISTOR TO CONTROL PANEL MTG, CADMIUM OR ZINC PLATED, NO. 6-32 THD SIZE, 3/8 IN. LG	EA	2	*	*	*	*	*	*	*	*	*	5	3
0 00289	5310-205-7782	WASHER, PLAT: RESISTOR TO CONTROL PANEL MTG, 3/16 IN. ID, 7/16 IN. OD, 0.049 IN. THK	EA	1	*	*	*	*	*	*	*	*	*	5	12
0 00290	5310-045-3296	WASHER, LOCK: RESISTOR TO CONTROL PANEL MTG, CADMIUM OR ZINC CHROMATE, 0.194 IN. ID, 0.337 IN. OD, 0.047 IN. THK	EA	1	*	*	*	*	*	*	*	*	*	5	6
0 00291	5310-637-9541	WASHER, LOCK: RESISTOR TO PANEL MTG, CADMIUM OR ZINC PLATED, 0.382 IN. ID, 0.688 IN. OD, 0.094 IN. THK	EA	2	*	*	*	*	*	*	*	*	*	5	9
X2 0 00292	5330-694-2032	WASHER, NONMETALLIC: RESISTOR TO CONTROL PANEL MTG, FIBER, 13/64 IN. ID, 5/16 IN. OD, 1/16 IN. THK	EA	2										5	10
00293		4413 - RECTIFIERS													
0 00294	5310-207-9272	NUT, PLAIN, HEXAGON: RECTIFIER TO CONTROL PANEL MTG, CADMIUM OR ZINC PLATED, NO. 10-32 THD SIZE	EA	1	*	*	*	*	*	*	*	*	*	5	1
P 0 00295	5961-794-9862	RECTIFIER, SEMICONDUCTOR DEVICE 508C516H60 (88725)	EA	1	2	2	4	2	2	4	48	10	5	17	
0 00296	5310-045-3299	WASHER, LOCK: RECTIFIER TO CONTROL PANEL MTG, CADMIUM OR ZINC PLATED, 0.168 IN. ID, 0.296 IN. OD, 0.040 IN. THK	EA	1	*	*	*	*	*	*	*	*	*	5	2

(1) SMR CODE INDEX NO.	(2) FEDERAL STOCK NUMBER	(3) DESCRIPTION REFERENCE NO. & MFR. CODE USABLE ON CODE	(4) UNIT OF ISSUE	(5) QTY INC IN UNIT PACK	(6) QTY INC IN UNIT	(7) 30-DAY DS MAINT ALLOWANCE (A)	(8) 30-DAY GS MAINT ALLOWANCE (B)	(9) 1-YR ALW PER 100	(10) DEPOT MAINT ALW- PER EQUIP EQUIP	(11) ILLUS- TRATION (A)	(11) ITEM NO.				
						1-20	21-50	51-100	1-20	21-50	51-100	EQUIP CNTG	100 EQUIP	FIG NO.	ITEM NO.
00297		4415 - HEAD, TORCH AND GUN UNITIZED COMPONENTS													
X2 0 00298	3431-929-0810	GUN ASSEMBLY: WELDING 21N5941 (88725)	EA	1										7	
P 0 00299	3431-875-7930	ADAPTER 419A003H01 (88725)	EA	1	*	*	2	*	*	2	6	3	7	35	
X2 0 00300		ADAPTER, STRAIGHT, PIPE TO HOSE: BRASS, SPECIAL 419A043H01 (88725)	EA	1										7	4
X2 0 00301		BARREL ASSEMBLY: GUN 419A002G01 (88725)	EA	1										7	28
X1 00302		BARREL: GUN 419A001H02 (88725)	EA	1											
X1 00303		LUG: CURRENT 419A001H01 (88725)	EA	1											
X2 0 00304		BOLT, MACHINE: BEARING ARM 419A025H01 (88725)	EA	1										7	19
X2 0 00305		BOLT, MACHINE: REEL COVER 419A029H01 (88725)	EA	1										7	16
P 0 00306	3431-875-7641	BOOT 419A046H01 (88725)	EA	1		*	2	*	*	2	6	10	6	12	
X2 0 00307		BRACKET AND FITTING ASSEMBLY, MOUNTING 427C605G03 (88725)	EA	1										7	41
X2 0 00308		BRACKET ASSEMBLY 429C554G02 (88725)	EA	1										7	40
X1 00309		BRACKET, MOUNTING 429C554H04 (88725)	EA	1											
X1 00310		INSERT 429C554H03 (88725)	EA	1											
X2 0 00311		FITTING ASSEMBLY: GAS 427C605G04 (88725)	EA	1										7	3

(1) SMR CODE	(2) FEDERAL STOCK INDEX NUMBER	(3) DESCRIPTION	(4)	(5) QTY INC IN UNIT PACK	(6) QTY INC IN UNIT	(7) 30-DAY DS MAINT ALLOWANCE (A)	(7) 30-DAY DS MAINT ALLOWANCE (B)	(7) 30-DAY DS MAINT ALLOWANCE (C)	(8) 30-DAY GS MAINT ALLOWANCE (A)	(8) 30-DAY GS MAINT ALLOWANCE (B)	(8) 30-DAY GS MAINT ALLOWANCE (C)	(9) 1-YR ALW PER 100	(10) DEPOT MAINT ALW- PER 100 EQUIP	(11) ILLUS- TRATION (A)	(11) ITEM NO. (B)
		REFERENCE NO. & MFR. CODE USABLE ON CODE	UNIT OF ISSUE			1-20	21-50	51-100	1-20	21-50	51-100	EQUIP CNTG	100 EQUIP	FIG NO.	ITEM NO.
0 00312	4730-639-9730	ELBOW, PIPE: BRASS; ONE END MALE, OTHER END FEMALE, 1/8-27 THD SIZE	EA	1	*	*	*	*	*	*	*	*	*	7	2
0 00313	4730-278-4829	ELBOW, PIPE: 45 DEG, ONE END MALE, OTHER END FEMALE, 1/8-27 THD SIZE	EA	1	*	*	*	*	*	*	*	*	*	7	1
P 0 00314	3431-875-7651	BRACKET, REEL BRAKE SUPPORT 419A008H01 (88725)	EA	1	*	*	2	*	*	2	6	3	7	46	
P 0 00315	3431-446-2643	BRAKE: REEL 419A011H01 (88725)	EA	1	*	*	2	*	*	2	6	3	7	18	
P 0 00316	3431-446-2646	BUSHING, GUIDE: REAR 205A007H02 (88725)	EA	1	2	4	8	2	4	8	96	100	7	45	
P 0 00317	3431-446-2645	BUSHING, SLEEVE: FRONT 220A336H03 (88725)	EA	1	2	4	8	2	4	8	96	100	7	42	
P 0 00318	3431-875-7624	CABLE ASSEMBLY: CURRENT 310B142G01 (88725)	EA	1					SEE	GRP	4408				
P F 00319	3431-875-7626	CABLE ASSEMBLY: GUN TO TERMINAL STRIP 311B796G03 (88725)	EA	1					SEE	GRP	4408				
P F 00320	5910-875-7880	CAPACITOR: GUN 121P47302S2 (56289)	EA	1					SEE	GRP	4410				
P 0 00321	3431-875-7652	COVER, WIRE REEL PROTECTING 311B71G01 (88725)	EA	1	*	*	2	*	*	2	6	3	7	15	
X1 00322	3431-875-7652	COVER: REEL 637C247H01 (88725)	EA	1											
P 0 00323	5325-281-3536	GROMMET, RUBBER: 1/2 IN. ID. 1 IN. OD, 3/32 IN. THK 282498 (88725)	EA	1	*	*	2	*	*	2	6	5	7	5	
X2 F 00324		HANDLE ASSEMBLY: GUN 301B663G01 (88725)	EA	1										6	4
P 0 00325	3431-875-7627	HANDLE 557D467G03 (88725)	EA	1	*	*	2	*	*	2	6	5			
F 00326	5305-013-1904	SCREW, MACHINE: HANDLE MTG, CADIMUM OR ZINC PLATED, NO. 6-32 THD SIZE, 5/8 IN. LG	EA	1	*	*	*	*	*	*	*	*	*	6	10

(1) SMR CODE	(2) FEDERAL STOCK INDEX NUMBER	(3) DESCRIPTION	(4)	(5) QTY INC IN UNIT PACK	(6) QTY INC IN UNIT	(7) 30-DAY DS MAINT ALLOWANCE (A)	(7) 21-50 (B)	(7) 51-100 (C)	(8) 30-DAY GS MAINT ALLOWANCE (A)	(8) 21-50 (B)	(8) 51-100 (C)	(9) 1-YR ALW PER 100	(10) DEPOT MAINT ALW- PER EQUIP	(11) ILLUS- TRATION (A)	(11) ITEM NO. (B)
0 00327	5305-616-2529	SCREW, MACHINE: SHIELD TO BRACKET MTG, CADMIUM OR ZINC PLATED, NO. 6-32 THD SIZE, 3/8 IN. LG	EA	3	*	*	*	*	*	*	*	*	*	7	10
P F 00328	3431-446-2638	SPRING, HELICAL, COMPRESSION: TRIGGER 31D4432H01 (88725)	EA	1	*	*	2	*	*	2	6	10	6	2	
P F 00329	3431-446-2637	SPRING, TRIGGER 205A091H01 (88725)	EA	1	*	*	2	*	*	2	6	10	6	1	
P F 00330	3431-875-7631	SWITCH, INCHING 301B663H09 (88725)	EA	1				SEE	GRP	4410					
P F 00331	5930-875-7879	SWITCH, TRIGGER 44X3880H17 (88725)	EA	1				SEE	GRP	4410					
P F 00332	3431-875-7630	TRIGGER 205A089H01 (88725)	EA	1	*	*	2	*	*	2	6	10	6	3	
P O 00333	3431-875-7625	HOSE ASSEMBLY: - GAS 432C506G01 (88725)	EA	1				SEE	GRP	4408					
P O 00334	3431-875-7643	INSULATION 419A010H01 (88725)	EA	1	*	*	2	*	*	2	6	10	7	38	
P O 00335	3431-875-7642	INSULATION, GUN BARREL 419A005H02 (88725)	EA	1	*	*	2	*	*	2	6	10	7	29	
X2 F 00336		INSULATOR: MOTOR 222A550H01 (88725)	EA	1										6	21
P F 00337	3431-875-7632	MOTOR 429C550G02 (88725)	EA	1	*	*	2	*	*	2	6	3	6	9	
P O 00338	3431-446-2642	NOZZLE, GAS 311B703H02 (88725)	EA	1	13	25	50	13	25	50	600	100	7	34	
O 00339	5310-723-4458	NUT, PLAIN, HEXAGON: DRIVE ROLL ATTACHING 1/4-20 THD SIZE	EA	1	*	*	*	*	*	*	*	*	*	6	5
P O 00340	3431-875-7633	ROLL, DRIVE 419A009G01 (88725)	EA	1	*	*	2	*	*	2	6	5	6	8	
O 00341	5305-614-0247	SCREW, MACHINE: BEARING ARM MTG, CADMIUM OR ZINC PLATED, NO. 10-32 THD SIZE 5/8 IN. LG	EA	1	*	*	*	*	*	*	*	*	*	7	26

(1) SMR CODE INDEX NO.	(2) FEDERAL STOCK NUMBER	(3) DESCRIPTION	(4)	(5) QTY INC IN UNIT PACK	(6) QTY INC IN UNIT	(7) 30-DAY DS MAINT ALLOWANCE (A) (B) (C)	(8) 30-DAY OS MAINT ALLOWANCE (A) (B) (C)	(9) 1-YR ALW PER EQUIP	(10) DEPOT MAINT PER 100 EQUIP	(11) ILLUS- TRATION (A) (B)			
		REFERENCE NO. & MFR. CODE USABLE ON CODE	UNIT OF ISSUE			1-20 21-50 51-100	1-20 21-50 51-100	CNTGCTY	FIG NO.	ITEM NO.			
0 00342	5305-013-1919	SCREW, MACHINE: BRACKET AND FITTING ASSEMBLY MTG, CADMIUM OR ZINC CHROMATE, NO. 6-32 THD SIZE 1 IN. LG	EA	1	*	*	*	*	*	7	44		
0 00343	5305-012-5519	SCREW, MACHINE: BRACKET AND FITTING ASSEMBLY MTG, CADMIUM OR ZINC PLATED, NO. 6-32 THD SIZE, 1 1/2 IN. LG	EA	3	*	*	*	*	*	7	37		
F 00344	5305-616-2529	SCREW, MACHINE: HANDLE MTG, CADMIUM OR ZINC PLATED, NO. 6-32 THD SIZE, 3/8 IN. LG	EA	3	*	*	*	*	*	6	11		
X2 0 00345		SCREW, MACHINE: HOUSING TO GUN BARREL MTG, NO. 6-32 THD SIZE, 1/4 IN. LG 576D964H68 (88725)	EA	4						7	31		
0 00346	5305-984-5676	SCREW, MACHINE: REEL SHAFT MTG, CADMIUM OR ZINC PLATED, 5/16-18 THD SIZE, 3/4 IN. LG	EA	1	*	*	*	*	*	7	11		
0 00347	5305-855-0971	SCREW, TAPPING, THREAD CUTTING: BRAKE TO BRAKE SUPPORT MTG, CADMIUM OR ZINC PLATED, NO. 4-40 THD SIZE, 1/4 IN. LG	EA	2	*	*	*	*	*	7	17		
0 00348	5305-809-5978	SCREW, TAPPING, THREAD FORMING: BRAKE SUPPORT MTG, CADMIUM OR ZINC PLATED, NO. 6-32 THD SIZE, 3/8 IN. LG	EA	2	*	*	*	*	*	7	9		
P 0 00349	3431-875-7635	SCREW: THUMB 422A505G01 (88725)	EA	1	*	*	2	*	2	6	3	7	32
P 0 00350	3431-446-2639	SEAL, WIRE FEED REEL SHAFT 76D964H07 (88725)	EA	2	*	*	2	*	2	6	20	7	14
0 00351	5305-719-5336	SETScrew: FRONT AND REAR GUIDE BUSHING TO BRACKET ATTACHING, NO. 8-32 THD SIZE, 1/8 IN. LG	EA	2	*	*	*	*	*	7	43		
X2 0 00352		SETScrew: 1/4-20 THD SIZE, 1/4 IN. LG 44A3880H45 (88725)	EA	1						7	39		
X2 0 00353		SHAFT: REEL 44A8024H01 (88725)	EA	1						7	13		
X2 0 00354		SHIELD: REEL COVER 576D963G02 (88725)	EA	1						7	6		
X2 F 00355		SLEEVING: MOTOR LEAD 422A484H02 (88725)	EA	2						6	16		
P 0 00356	4935-875-7648	SPRING, HELICAL, COMPRESSION 419A027H01 (88725)	EA	1	*	*	2	*	2	6	3	7	20

(1) SMR CODE	(2) FEDERAL STOCK NUMBER	(3) DESCRIPTION	(4)	(5) QTY INC IN UNIT PACK	(6) QTY INC IN UNIT	(7) 30-DAY DS MAINT ALLOWANCE (A) (B) (C)	(8) 30-DAY OS MAINT ALLOWANCE (A) (B) (C)	(9) 1-YR ALW PER EQUIP	(10) DEPOT MAINT PER EQUIP	(11) ILLUS- TRATION FIG NO.	(B) ITEM NO.					
INDEX NO.		REFERENCE NO. & MFR. CODE	USABLE ON CODE	UNIT OF ISSUE		1-20	21-50	51-100	1-20	21-50	51-100	NNTGTY	100	100		
X2 0 00357		STRAP: COPPER 576D964H64 (88725)		EA	1										6	13
P 0 00358	3431-875-7644	SWING ARM ASSEMBLY 310B141G01 (88725)		EA	1	*	*	2	*	*	2	6	3	7	7	24
X2 0 00359		ARM: BEARING 419AD26H02 (88725)		EA	1										7	21
P 0 00360	3431-875-7645	BEARING, IDLER-ROLL 557D415H39 (88725)		EA	1	*	*	2	*	*	2	6	3	7	7	23
P 0 00361	3431-875-7646	SCREW: NYLON 442A169H01 (88725)		EA	1	*	*	2	*	*	2	6	3	7	7	25
P 0 00362	3431-446-2641	WASHER, WIRE PRESSURE ARM 310B141H04 (88725)		EA	2	*	*	2	*	*	2	6	20	7	7	22
P 0 00363	3431-446-2644	TUBE, GUIDE 306B172H09 (88725)		EA	1	2	4	8	2	4	8	96	100	7	7	36
X2 0 00364		TUBE: GUN 419A004H01 (88725)		EA	1										7	33
P 0 00365	3431-875-7637	WASHER 419AD06H01 (88725)		EA	2	*	*	2	*	*	2	6	10	7	7	27
P 0 00366	3431-875-7638	WASHER 419AD06H02 (88725)		EA	1	*	*	2	*	*	2	6	5	7	7	30
0 00367	5310-147-2065	WASHER, FLAT: DRIVE ROLL ATTACHING, 0.265 IN. ID, 0.438 IN. OD, 0.040 IN. THK		EA	1	*	*	*	*	*	*	*	*	*	6	7
0 00368	5310-639-1532	WASHER, FLAT: REEL SPACER, CADMIUM OR ZINC CHROMATE, 0.313 IN. ID, 0.875 IN. OD, 0.065 IN. THK		EA	1	*	*	*	*	*	*	*	*	*	7	12
0 00369	5310-082-1404	WASHER, FLAT: SHIELD TO BRACKET, BRAKE SUPPORT MTG, CADMIUM OR ZINC CHROMATE, 0.156 IN. ID, 0.375 IN. OD, 0.049 IN. THK		EA	5	*	*	*	*	*	*	*	*	*	7	7
0 00370	5310-013-1044	WASHER, LOCK: BRACKET AND FITTING ASSEMBLY MTG, CADMIUM OR ZINC PLATED, 0.141 IN. ID, 0.253 IN. OD, 0.031 IN. THK		EA	9	*	*	*	*	*	*	*	*	*	7	8
0 00371	5310-010-3319	WASHER, LOCK: DRIVE ROLL ATTACHING 0.255 IN. ID, 0.493 IN. OD, 0.062 IN. THK		EA	1	*	*	*	*	*	*	*	*	*	6	6

(1) SMR CODE INDEX NO.	(2) FEDERAL STOCK NUMBER	(3) DESCRIPTION	(4) UNIT OF ISSUE	(5) QTY INC IN UNIT PACK	(6) QTY INC IN UNIT	(7) 30-DAY DS MAINT ALLOWANCE (A) (B) (C)	(8) 30-DAY GS MAINT ALLOWANCE (A) (B) (C)	(9) 1-YR ALW PER 100 EQUIP CNTGCTY	(10) DEPOT MAINT ALW- PER 100 EQUIP	(11) ILLUS- TRATION (A) (B)	ITEM NO.
00372		GROUP 95 - GENERAL USE STANDARDIZED PARTS									
00373		9501 - BULK MATERIAL									
P 0 00374	4710-162-1018	PIPE, STEEL: 1/2 IN DIA, 0.109 IN. WALL THK	FT	*	*	*	*	*	2	2	
P 0 00375	9515-331-0465	STEEL SHEET, CARBON, HOT ROLLED: 0.747 IN. THK, 36 IN. WIDE, 120 IN. LG	SH	*	*	*	*	*	2	2	
P 0 00376	6145-170-3521	WIRE, ELECTRICAL: COPPER TINNED FINISH, NO. 16 AWG, 16 STRANDS OF NO. 28 AWG, 0.129 IN. DIA	FT	*	*	*	*	*	2	2	
P 0 00377	6145-170-6872	WIRE, ELECTRICAL: COPPER, TINNED FINISH, NO. 16 AWG, 16 STRANDS OF NO. 28 AWG, 0.129 IN. DIA	FT	*	*	*	*	*	4	4	
P 0 00378	6145-235-1007	WIRE, ELECTRICAL: COPPER, TINNED FINISH, NO. 16 AWG, 16 STRANDS OF NO. 28 AWG, 0.129 IN. DIA	FT	*	*	*	*	*	2	2	
P 0 00379	6145-164-7026	WIRE, ELECTRICAL: COPPER, TINNED FINISH, NO. 16 AWG, 19 STRANDS OF NO. 29 AWG, 0.102 IN. DIA	FT	*	*	*	*	*	2	2	
P 0 00380	6145-295-0806	WIRE, ELECTRICAL: COPPER, TINNED FINISH, NO. 16 AWG, 19 STRANDS OF NO. 29 AWG, 0.129 IN. DIA	FT	*	*	*	*	*	4	4	
P 0 00381	6145-295-1271	WIRE, ELECTRICAL: COPPER, TINNED FINISH, NO. 16 AWG, 19 STRANDS OF NO. 29 AWG, 0.102 IN. DIA	FT	*	*	*	*	*	4	4	
P 0 00382	6145-295-1273	WIRE, ELECTRICAL: COPPER, TINNED FINISH, NO. 16 AWG, 19 STRANDS OF NO. 29 AWG, 0.102 IN. DIA	FT	*	*	*	*	*	4	4	
P 0 00383	6145-160-4968	WIRE, ELECTRICAL: COPPER, TINNED FINISH, NO. 16 AWG, 19 STRANDS OF NO. 29 AWG, 0.130 IN. DIA	FT	*	*	*	*	*	4	4	
P 0 00384	6145-160-4965	WIRE, ELECTRICAL: COPPER, TINNED FINISH NO. 16 AWG, 19 STRANDS OF NO. 29 AWG, 0.130 IN. DIA	FT	*	*	*	*	*	2	2	

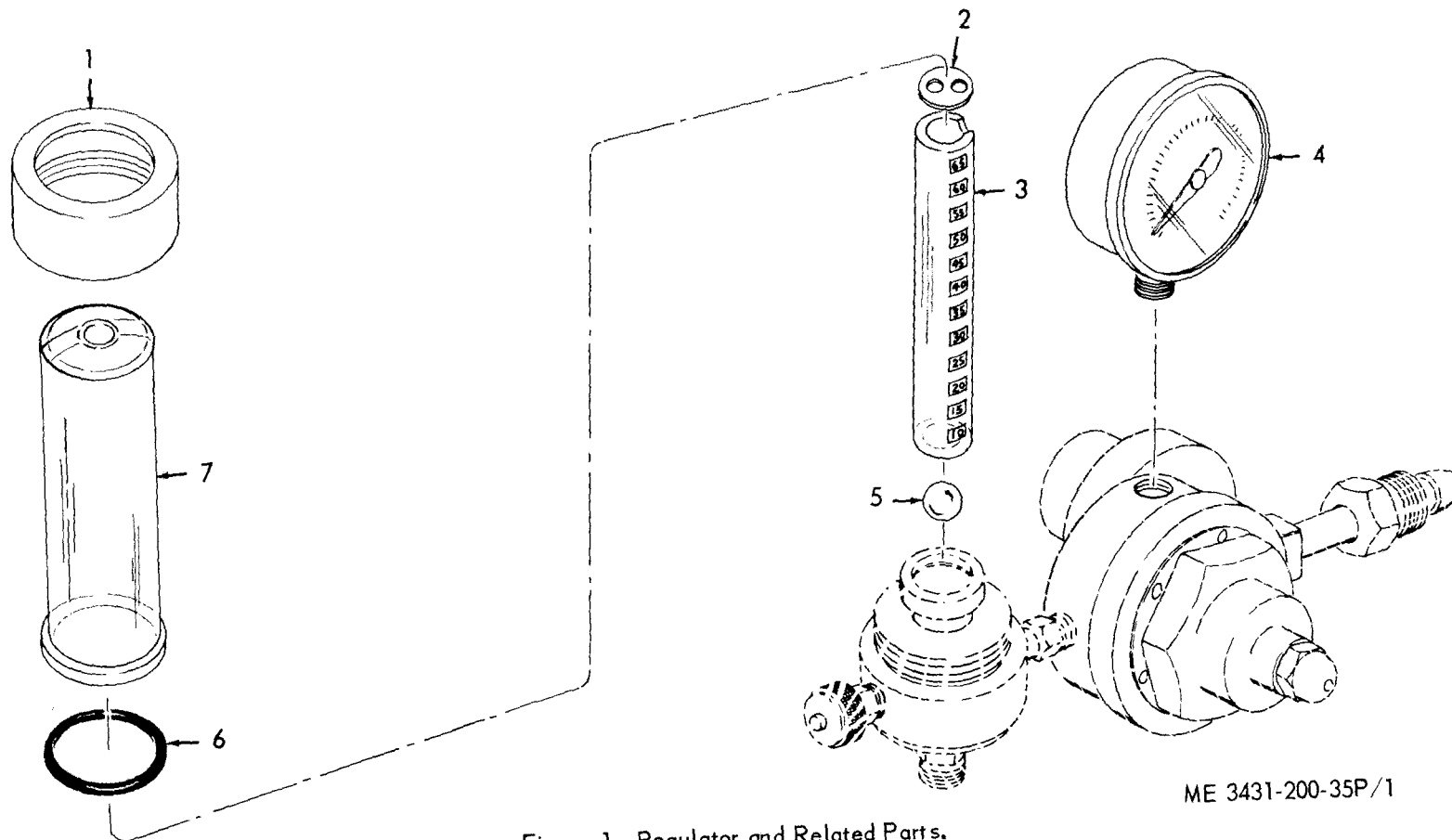


Figure 1. Regulator and Related Parts.

INDEX TO PARTS, FIGURE 1

Reference Number	Functional Group	Item Name
1	4400	NUT
2	4400	GASKET
3	4400	TUBE
4	4400	GAGE
5	4400	BALL
6	4400	PACKING
7	4400	CUP

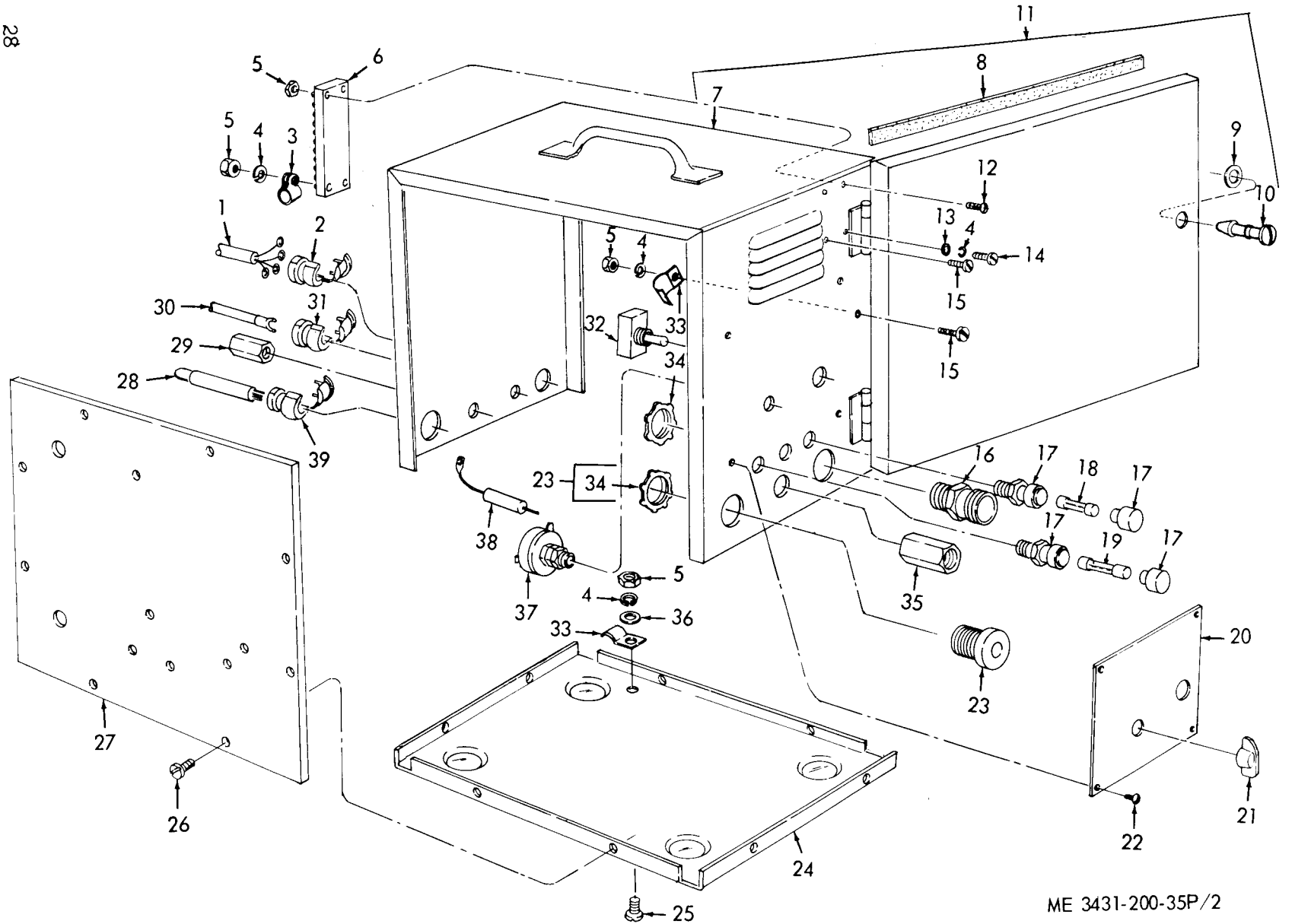
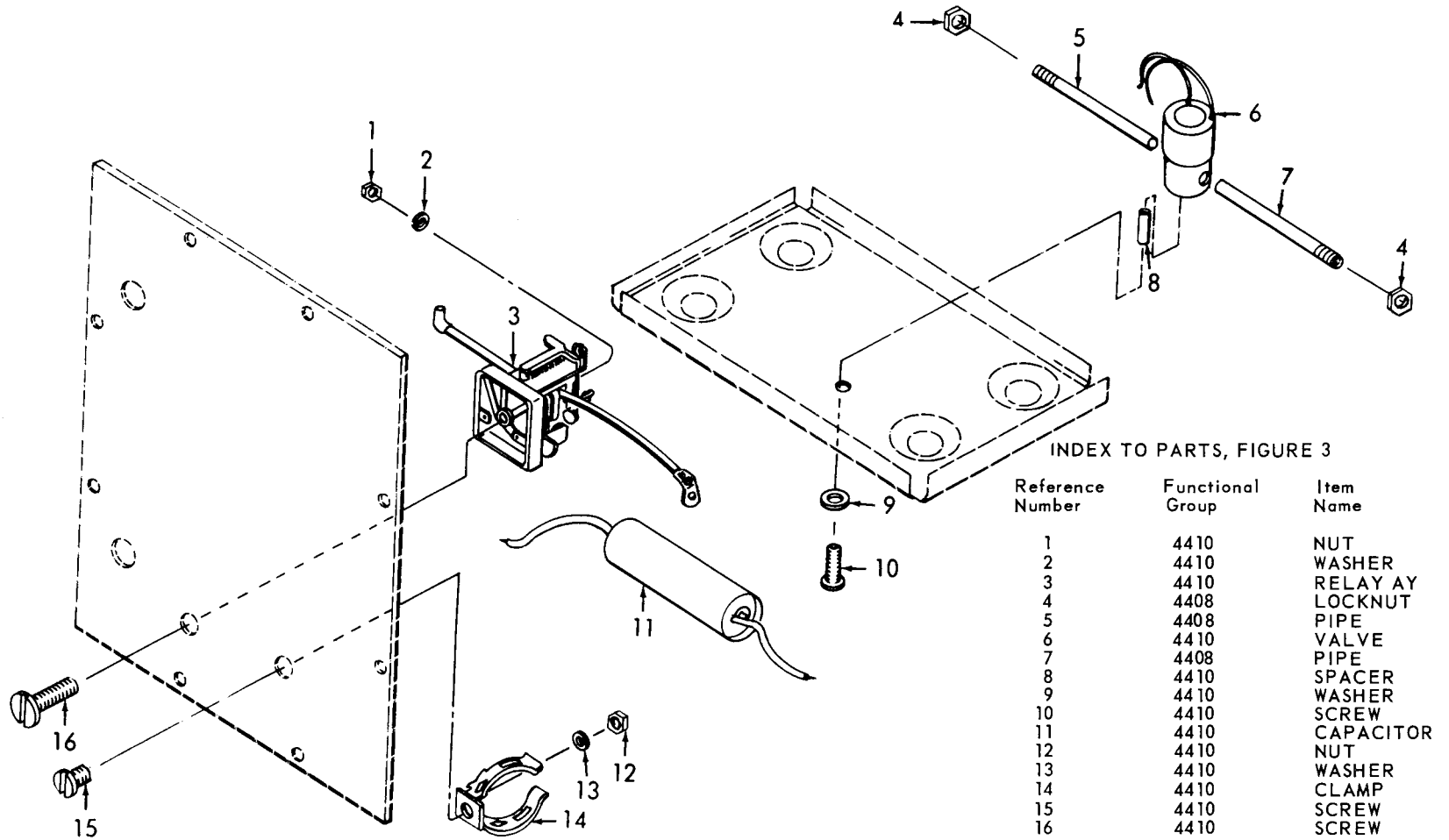


Figure 2. Control Assembly and Related Parts.

ME 3431-200-35P/2

INDEX TO PARTS, FIGURE 2

Reference Number	Functional Group	Item Name	Reference Number	Functional Group	Item Name
1	4408	CABLE AY	19	4409	FUSE
2	4408	RELIEF	20	2210	NAMEPLATE
3	4407	CLIP	21	4411	KNOB
4	4407	WASHER	22	2210	SCREW
4	4408	WASHER	23	4408	RECEPTACLE
5	4407	NUT	24	4407	BASE
5	4408	NUT	25	4407	SCREW
6	4408	TERMINAL STRIP	26	4407	SCREW
7	4407	CABINET AY	27	4407	PANEL
8	4407	GASKET	28	4408	CABLE AY
9	4407	GROMMET	29	4408	FITTING
10	4407	STUD	30	4408	CABLE AY
11	4407	ENCLOSURE	31	4408	RELIEF
12	4408	SCREW	32	4410	SWITCH
13	4408	WASHER	33	4407	CLAMP
14	4408	SCREW	34	4408	LOCKNUT
15	4407	SCREW	35	4408	FITTING
15	4408	SCREW	36	4407	WASHER
16	4408	RELIEF	37	4411	RHEOSTAT
17	4409	FUSE HOLDER	38	4411	RESISTOR
18	4409	FUSE	39	4408	BUSHING



ME 3431-200-35P/3

Figure 3. Relay, Solenoid, Valve, and Related Parts.

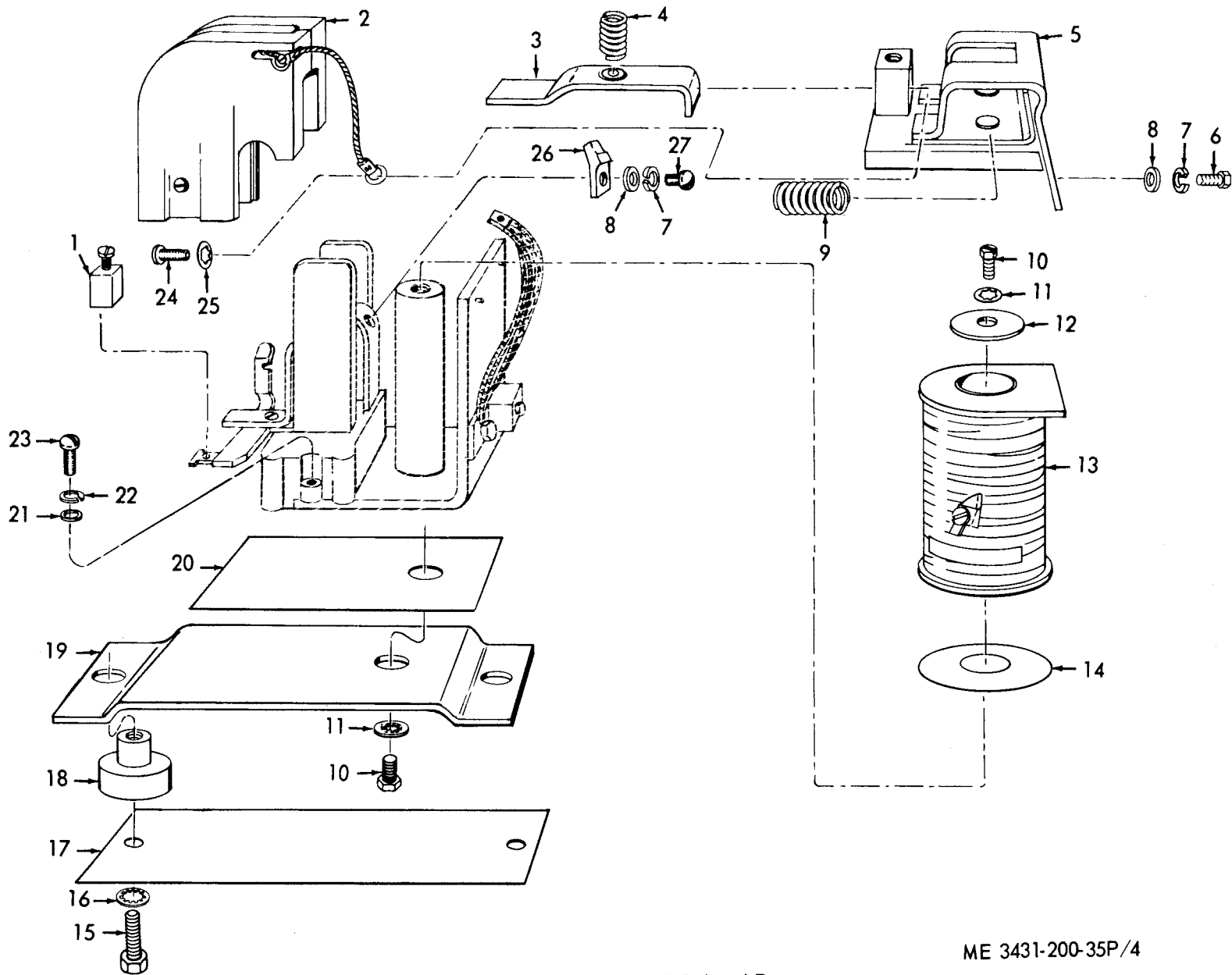
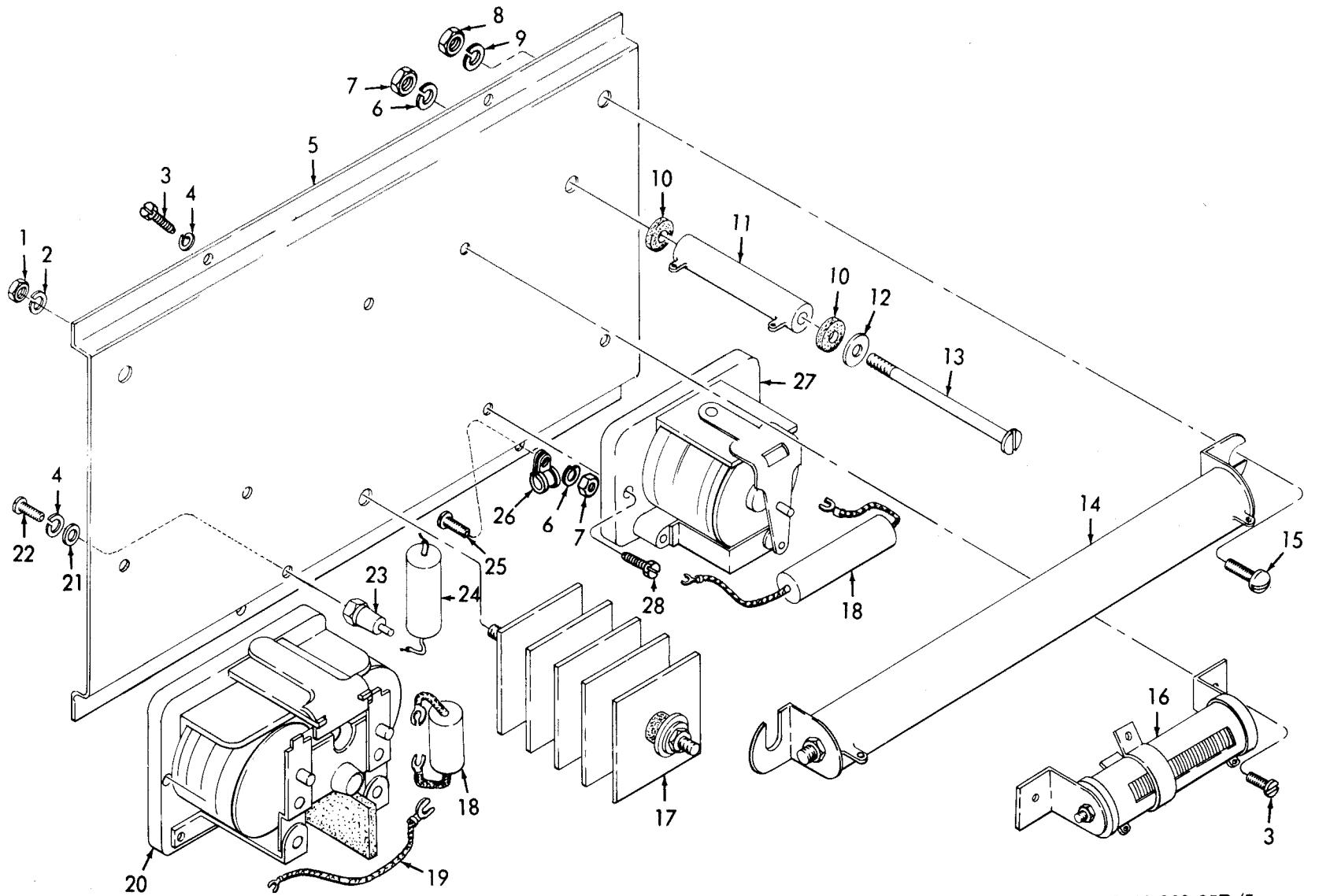


Figure 4. Contractor and Related Parts.

ME 3431-200-35P/4

INDEX TO PARTS, FIGURE 4

Reference Number	Functional Group	Item Name	Reference Number	Functional Group	Item Name
1	4410	TERMINAL	14	4410	RETAINING WASHER
2	4410	BOX AY	15	4410	SCREW
3	4410	CONTACT	16	4410	WASHER
4	4410	SPRING	17	4410	FISH PAPER
5	4410	PLATE	18	4410	NUT
6	4410	SCREW	19	4410	PANEL
7	4410	WASHER	20	4410	FISH PAPER
8	4410	WASHER	21	4410	WASHER
9	4410	SPRING	22	4410	WASHER
10	4410	SCREW	23	4410	SCREW
11	4410	WASHER	24	4410	SCREW
12	4410	WASHER	25	4410	WASHER
13	4410	COIL	26	4410	CONTACT
			27	4410	SCREW



ME 3431-200-35P/5

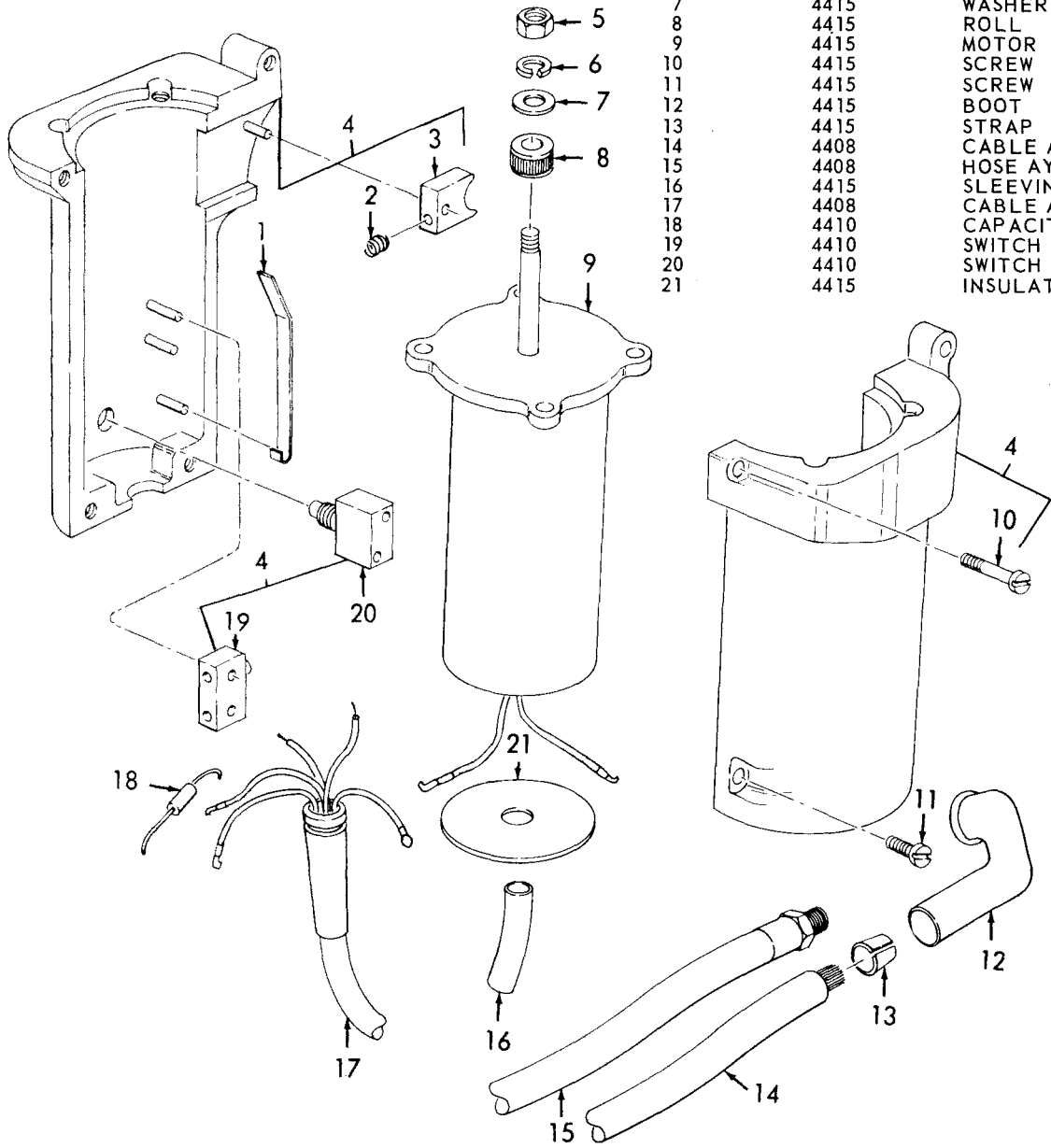
Figure 5. Control Panel and Related Parts.

INDEX TO PARTS, FIGURE 5

Reference Number	Functional Group	Item Name	Reference Number	Functional Group	Item Name
1	4413	NUT	14	4411	RESISTOR
2	4413	WASHER	15	4411	SCREW
3	4407	SCREW	16	4411	RESISTOR
3	4411	SCREW	17	4413	RECTIFIER
4	4407	WASHER	18	4410	CAPACITOR
4	4410	WASHER	19	4410	LEAD
5	4407	PANEL	20	4410	RELAY
6	4411	WASHER	21	4410	WASHER
7	4407	NUT	22	4410	SCREW
7	4411	NUT	23	4410	TERMINAL
8	4411	NUT	24	4410	CAPACITOR
9	4411	WASHER	25	4407	SCREW
10	4411	WASHER	26	4407	CLAMP
11	4411	RESISTOR	27	4410	RELAY
12	4411	WASHER	28	4410	SCREW
13	4411	SCREW			

INDEX TO PARTS, FIGURE 6

Reference Number	Functional Group	Item Name
1	4415	SPRING
2	4415	SPRING
3	4415	TRIGGER
4	4415	HANDLE AY
5	4415	NUT
6	4415	WASHER
7	4415	WASHER
8	4415	ROLL
9	4415	MOTOR
10	4415	SCREW
11	4415	SCREW
12	4415	BOOT
13	4415	STRAP
14	4408	CABLE AY
15	4408	HOSE AY
16	4415	SLEEVING
17	4408	CABLE AY
18	4410	CAPACITOR
19	4410	SWITCH
20	4410	SWITCH
21	4415	INSULATOR



ME 3431-200-35P/6

Figure 6. Handle, Motor, and Related Parts.

INDEX TO PARTS, FIGURE 7

REFERENCE NUMBER	FUNCTIONAL GROUP	ITEM NAME	REFERENCE NUMBER	FUNCTIONAL GROUP	ITEM NAME
1	4415	ELBOW	24	4415	SWING ARM AY
2	4415	ELBOW	25	4415	SCREW
3	4415	FITTING AY	26	4415	SCREW
4	4415	ADAPTER	27	4415	WASHER
5	4415	GROMMET	28	4415	BARREL AY
6	4415	SHIELD	29	4415	INSULATION
7	4415	WASHER	30	4415	WASHER
8	4415	WASHER	31	4415	SCREW
9	4415	SCREW	32	4415	SCREW
10	4415	SCREW	33	4415	TUBE
11	4415	SCREW	34	4415	NOZZLE
12	4415	WASHER	35	4415	ADAPTER
13	4415	SHAFT	36	4415	TUBE
14	4415	SEAL	37	4415	SCREW
15	4415	COVER	38	4415	INSULATION
16	4415	BOLT	39	4415	SETSCREW
17	4415	SCREW	40	4415	BRACKET AY
18	4415	BRAKE	41	4415	BRACKET-FITTING AY
19	4415	BOLT	42	4415	BUSHING
20	4415	SPRING	43	4415	SETSCREW
21	4415	ARM	44	4415	SCREW
22	4415	WASHER	45	4415	BUSHING
23	4415	BEARING	46	4415	BRACKET

SECTION IV. INDEX-FEDERAL STOCK NUMBER AND REFERENCE NUMBER
 CROSS-REFERENCE TO INDEX NUMBER

STOCK NUMBER	INDEX NUMBER	STOCK NUMBER	INDEX NUMBER
1450-775-6226	00037	4730-287-1592	00010
3431-064-6459	00004	4730-639-9730	00312
3431-446-1961	00084	4820-472-9955	00013
3431-446-1961	00199	4820-567-0408	00067
3431-446-2637	00329	4935-875-7648	00356
3431-446-2638	00328	5305-012-5519	00343
3431-446-2639	00350	5305-013-1904	00326
3431-446-2641	00362	5305-013-1919	00342
3431-446-2642	00338	5305-014-8060	00005
3431-446-2643	00315	5305-014-8060	00006
3431-446-2644	00363	5305-016-9450	00136
3431-446-2645	00317	5305-017-2125	00134
3431-446-2646	00316	5305-017-2125	00263
3431-509-2562	00009	5305-017-3397	00222
3431-858-3080	00140	5305-017-7335	00223
3431-858-3080	00186	5305-021-5453	00258
3431-875-7624	00163	5305-151-0372	00132
3431-875-7624	00318	5305-151-0372	00184
3431-875-7625	00170	5305-253-5609	00220
3431-875-7625	00333	5305-286-1494	00221
3431-875-7626	00166	5305-543-2665	00129
3431-875-7626	00319	5305-543-2665	00287
3431-875-7627	00325	5305-543-5621	00259
3431-875-7630	00332	5305-543-5621	00260
3431-875-7631	00267	5305-577-5517	00126
3431-875-7631	00330	5305-614-0247	00341
3431-875-7632	00337	5305-614-3423	00125
3431-875-7633	00340	5305-616-2529	00327
3431-875-7635	00349	5305-616-2529	00344
3431-875-7637	00365	5305-616-4831	00225
3431-875-7638	00366	5305-622-9476	00128
3431-875-7641	00306	5305-622-9476	00261
3431-875-7642	00335	5305-622-9478	00131
3431-875-7643	00334	5305-622-9478	00183
3431-875-7644	00358	5305-622-9486	00130
3431-875-7645	00360	5305-622-9486	00262
3431-875-7646	00361	5305-719-5336	00351
3431-875-7651	00314	5305-809-5978	00135
3431-875-7652	00321	5305-809-5978	00137
3431-875-7652	00322	5305-809-5978	00288
3431-875-7653	00112	5305-809-5978	00348
3431-875-7653	00176	5305-855-0971	00347
3431-875-7655	00075	5305-939-9232	00127
3431-875-7655	00164	5305-939-9232	00133
3431-875-7656	00077	5305-939-9232	00185
3431-875-7656	00167	5305-952-0760	00224
3431-875-7657	00076	5305-954-8151	00226
3431-875-7657	00165	5305-984-5676	00346
3431-875-7658	00141	5305-984-6203	00286
3431-875-7658	00270	5310-010-3319	00371
3431-875-7930	00299	5310-012-1841	00240
3431-929-0810	00298	5310-013-1044	00370
4310-607-8087	00030	5310-044-6179	00235
4530-888-0057	00054	5310-045-3296	00144
4710-162-1018	00265	5310-045-3296	00147
4710-162-1018	00374	5310-045-3296	00187
4730-014-0561	00172	5310-045-3296	00275
4730-014-0561	00177	5310-045-3296	00290
4730-014-4574	00171	5310-045-3299	00146
4730-278-4829	00313	5310-045-3299	00149

SECTION IV. INDEX-FEDERAL STOCK NUMBER AND REFERENCE NUMBER
 CROSS-REFERENCE TO INDEX NUMBER (CONTINUED)

STOCK NUMBER	INDEX NUMBER	STOCK NUMBER	INDEX NUMBER
5310-045-3299	00276	5905-875-7890	00284
5310-045-3299	00296	5910-668-3725	00197
5310-080-6694	00042	5910-875-7880	00196
5310-082-1404	00271	5910-875-7880	00320
5310-082-1404	00369	5910-875-7888	00078
5310-147-2065	00367	5910-875-7888	00194
5310-167-0765	00236	5920-065-3255	00095
5310-205-7782	00289	5920-065-3255	00191
5310-207-9272	00102	5920-280-4960	00094
5310-207-9272	00294	5920-280-4960	00190
5310-208-4074	00098	5920-556-0144	00096
5310-208-4074	00247	5920-556-0144	00192
5310-527-3288	00150	5930-875-7879	00268
5310-527-3288	00188	5930-875-7879	00331
5310-527-3288	00241	5930-875-7882	00139
5310-550-1130	00238	5930-875-7882	00266
5310-582-5965	00239	5940-283-5280	00152
5310-637-9541	00148	5940-549-1973	00245
5310-637-9541	00273	5945-259-5683	00114
5310-637-9541	00291	5945-259-5683	00251
5310-639-1532	00368	5945-366-7343	00230
5310-723-4458	00339	5945-366-7377	00218
5310-766-9632	00019	5945-367-1226	00217
5310-809-8544	00142	5945-367-1227	00216
5310-812-0992	00234	5945-875-7884	00116
5310-836-2458	00143	5945-875-7884	00253
5310-836-2458	00145	5945-875-7889	00115
5310-836-2458	00272	5945-875-7889	00252
5310-836-2458	00274	5950-875-7883	00202
5310-843-5586	00069	5961-794-9862	00113
5310-851-2674	00104	5961-794-9862	00295
5310-851-2674	00280	5970-367-1250	00210
5310-887-8043	00052	5975-803-2536	00074
5310-887-8043	00058	5975-803-2536	00162
5310-934-9757	00099	5975-889-5118	00117
5310-934-9757	00100	5975-889-5118	00178
5310-934-9757	00101	6110-525-3067	00205
5310-934-9757	00103	6110-525-3068	00206
5310-934-9757	00105	6145-160-4965	00384
5310-934-9757	00173	6145-160-4968	00153
5310-934-9757	00248	6145-160-4968	00156
5310-934-9757	00279	6145-160-4968	00383
5325-281-3536	00323	6145-164-7026	00246
5325-282-1884	00089	6145-164-7026	00379
5330-694-2032	00292	6145-170-3521	00154
5330-798-3017	00043	6145-170-3521	00376
5330-807-5490	00045	6145-170-6872	00155
5330-882-0595	00059	6145-170-6872	00377
5340-043-5621	00073	6145-235-1007	00378
5340-417-8878	00229	6145-235-1007	00378
5340-512-9403	00228	6145-295-0806	00158
5340-803-7635	00061	6145-295-0806	00380
5340-888-0058	00064	6145-295-1271	00159
5905-875-7881	00124	6145-295-1271	00381
5905-875-7881	00285	6145-295-1273	00160
5905-875-7883	00120	6145-295-1273	00382
5905-875-7883	00281	6680-072-6186	00066
5905-875-7886	00121	6680-888-0055	00026
5905-875-7886	00282	6680-888-0055	00022
5905-875-7887	00122	6685-072-6184	00031
5905-875-7887	00283	9905-807-3712	00003
5905-875-7890	00123	9515-331-0465	00109
		9515-331-0465	00375

SECTION IV. INDEX-FEDERAL STOCK NUMBER AND REFERENCE NUMBER
 CROSS-REFERENCE TO INDEX NUMBER (CONTINUED)

REFERENCE NO.	MFG CODE	INDEX NO.	REFERENCE NO.	MFG CODE	INDEX NO.
AJ5-40	72794	00089	121P47302S2	56289	00196
BR30015	14655	00079	121P47302S2	56289	00320
BR30015	14655	00195	1228720	88725	00097
PJ4P1	14655	00197	1228720	88725	00278
PR11D	77342	00114	1257344	88725	00213
PR11D	77342	00251	1257356	88725	00204
PR2949	77342	00256	1257363	88725	00230
SR2M1	28520	00117	1257366	88725	00217
SR2M1	28520	00178	1257367	88725	00218
SR47-02	63026	00053	1257371	88725	00207
SR6P1	77342	00119	1257373	88725	00210
SR6P1	77342	00182	1257374	88725	00237
SR8P1	28520	00074	1257399	88725	00232
SR8P1	28520	00162	1257402	88725	00215
SVJ90-02	63026	00013	1257462	88725	00216
SVJ90-02	63026	00014	1289431	88725	00208
SVJ90-03	63026	00062	1289441	88725	00229
SVJ90-03	63026	00063	13B5866G02	88725	00233
VTS40-02D	63026	00059	1403-02	63026	00027
VTS40-13	63026	00048	1403-05	63026	00039
VTS50-07B	63026	00069	1405-08	63026	00010
VTS85-02A	63026	00060	1406-01	63026	00029
VTS85-06	63026	00037	1407-11	63026	00044
VTS85-09	63026	00042	1407-21	63026	00043
VTS95-06	63026	00047	1408-25	63026	00032
V50-36	63026	00052	1408-44	63026	00019
V50-36	63026	00058	1408-82	63026	00033
V50-37-1	63026	00051	1419587	88725	00209
V60-03-1	63026	00057	1419590	88725	00211
0600-300	63026	00067	1419592	88725	00200
0701-6010	63026	00011	1486999	88725	00219
0705-02	63026	00061	1490509	88725	00203
0705-03	63026	00046	1490515	88725	00205
0708-01	63026	00045	1490516	88725	00206
0720-28	63026	00035	1490517	88725	00201
0720-29	63026	00036	1490640	88725	00202
0730-02	63026	00024	1490698	88725	00228
0730-03	63026	00020	16B9647G02	88725	00227
0731-02	63026	00026	160P3340A	88725	00004
0731-03	63026	00022	1600323	88725	00194
0733-02	63026	00025	1746613	88725	00080
0733-03	63026	00021	1746613	88725	00198
0735-01	63026	00023	1781453	88725	00082
0735-02	63026	00028	194F6	71279	00269
0737-03	63026	00040	205A007H02	88725	00316
0740-02	63026	00049	205A089H01	88725	00332
0740-03	63026	00055	205A091H01	88725	00329
0744-02	63026	00054	208A560H05	88725	00242
0746-02	63026	00050	21N5941	88725	00298
0746-02	63026	00056	21N5945	88725	00009
0760-01	63026	00034	220A338H03	88725	00317
0762-02	63026	00064	222A550H01	88725	00336
0970-0101	63026	00065	282498	88725	00323
1001-06	63026	00038	301B663G01	88725	00324
1001-08	63026	00012	301B663H09	88725	00267
1002-02	63026	00018	301B663H09	88725	00330
1012-05	63026	00015	306B172H09	88725	00363
1012-05	63026	00016	307B188H05	88725	00088
1014-01	63026	00068	31D4432H01	88725	00328
1015-08	63026	00066	31D9649COMBBBOO	88725	00084

SECTION IV. INDEX-FEDERAL STOCK NUMBER AND REFERENCE NUMBER
 CROSS-REFERENCE TO INDEX NUMBER (CONTINUED)

REFERENCE NO.	MFG CODE	INDEX NO.	REFERENCE NO.	MFG CODE	INDEX NO.
31D9649COMBBBOO	88725	00199	422A473H05	88725	00120
310B141G01	88725	00358	422A484H02	88725	00355
310B141H04	88725	00362	422A505G01	88725	00349
310B142G01	88725	00163	422A526G03	88725	00118
310B142G01	88725	00318	422A526G03	88725	00179
311B703H02	88725	00338	422A526H02	88725	00180
311B711G01	88725	00321	422A526H04	88725	00181
311B796G03	88725	00166	427C605G03	88725	00307
311B796G03	88725	00319	427C605G04	88725	00311
312001	75915	00095	427C612H02	88725	00096
312001	75915	00191	427C612H02	88725	00192
312002	75915	00094	429A051H02	88725	00139
312002	75915	00190	429A051H02	88725	00266
32B1029H15	88725	00140	429C550G02	88725	00337
32B1029H15	88725	00186	429C554G02	88725	00308
320B222G01	88725	00255	429C554H03	88725	00310
320B222H01	88725	00254	429C554H04	88725	00309
320B222H02	88725	00257	432C506G01	88725	00170
320B224G01	88725	00115	432C506G01	88725	00333
320B224G01	88725	00252	432C524G10	88725	00076
4000LB	63026	00031	432C524G10	88725	00165
419A001H01	88725	00303	435C512G04	88725	00077
419A001H02	88725	00302	435C512G04	88725	00167
419A002G01	88725	00301	44A3880H17	88725	00268
419A003H01	88725	00299	44A3880H17	88725	00331
419A004H01	88725	00364	44A3880H45	88725	00352
419A005H02	88725	00335	442A169H01	88725	00361
419A006H01	88725	00365	448A024H01	88725	00353
419A006H02	88725	00366	448A027H01	88725	00081
419A008H01	88725	00314	448A043H01	88725	00090
419A009G01	88725	00340	448A043H01	88725	00243
419A010H01	88725	00334	448A043H02	88725	00091
419A011H01	88725	00315	50-20	63026	00017
419A012H01	88725	00112	508C516H60	88725	00113
419A012H401	88725	00176	508C516H60	88725	00295
419A015H02	88725	00110	52D9036H05	88725	00083
419A015H02	88725	00174	552D181H45	88725	00212
419A015H07	88725	00111	552D181H55	88725	00231
419A015H07	88725	00175	557D415H39	88725	00360
419A025H01	88725	00304	557D436H33	88725	00123
419A026H02	88725	00359	557D436H33	88725	00284
419A027H01	88725	00356	557D467G03	88725	00325
419A029H01	88725	00305	55955	88725	00214
419A043H01	88725	00300	576D963G02	88725	00354
419A046H01	88725	00306	576D964H64	88725	00357
419A049H01	88725	00093	576D964H68	88725	00345
419A049H01	88725	00169	59C1598G13	88725	00075
419A050H01	88725	00092	59C1598G13	88725	00164
419A050H01	88725	00168	637C247H01	88725	00322
419A065H01	88725	00249	637C249H01	88725	00106
422AX71H11	88725	00253	637C251H01	88725	00107
422A460H01	88725	00124	637C251H01	88725	00250
422A460H01	88725	00285	73P47309	56289	00078
422A460H5	88725	00281	76D964H07	88725	00350
422A471H11	88725	00116	827D037G01	88725	00086
422A472H02	88725	00141	827D037G02	88725	00085
422A472H02	88725	00270	827D037H02	88725	00072
422A473H03	88725	00121	827D037H09	88725	00087
422A473H03	88725	00282	9G9359	88725	00071
422A473H04	88725	00122	930	63026	00030
422A473H04	88725	00283	973-01A	63026	00041

By Order of the Secretary of the Army:

W. C. WESTMORELAND,
*General, United States Army,
Chief of Staff.*

Official:

KENNETH G. WICKHAM,
*Major General, United States Army,
The Adjutant General.*

Distribution:

To be distributed in accordance with DA Form 12-25, Sec I (qty rqr Block #183), Direct and General Support maintenance requirements for Welding equipment.

TM 5-3431-200-35P WELDING SET, ARC, INERT GAS SHIELDED - 1969